

APRIL in PARIS

B³

| C[♭] | A⁷ | E[♭] | A⁷

| E[♭] A⁷ | D[♭] A⁷ | A⁻ | D⁷

| G | | C[♯] F[♯] | B / G

| A[♭] | G⁷ | C⁷ | F⁷

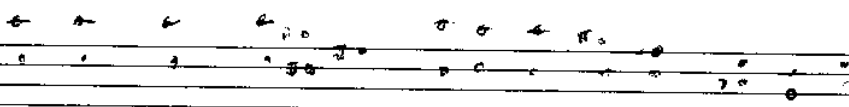
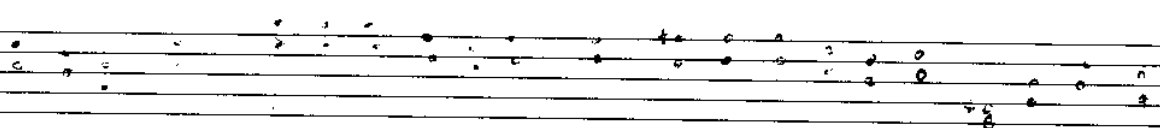
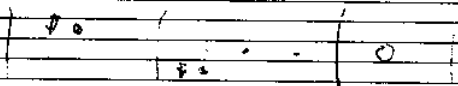
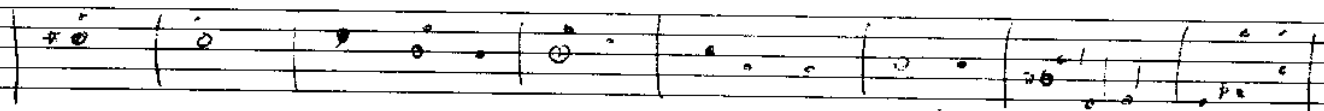
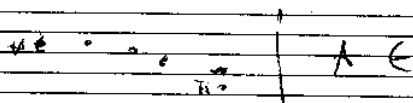
| A[♭] G⁻ | D | G⁻ | D

| C[♯] F[♯] | B⁻ / A | A[♭] C[♯] | F[♯] A⁷

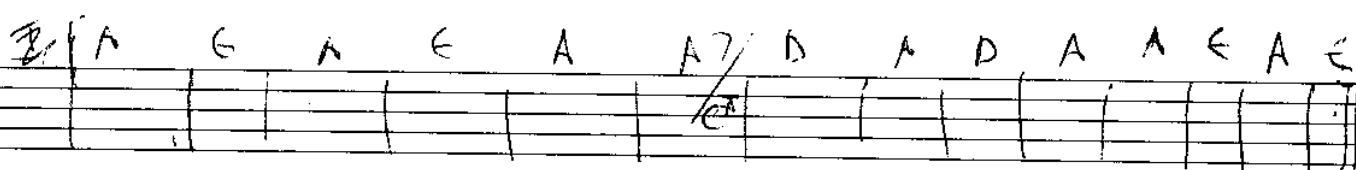
| E[♭] | A⁷ | F[♯] | B⁷

| E⁷ | E⁻ A⁷ | D |

Baby is black



A E B D A E E A D A



F# B B B D E E A E D

E A D A A

BIDDIES

BA.../DRUM

C7

2

C/E

A^b/E^b

CSUS
D⁵SUS

C/B

A-

E^b/B^b

C/B

E^b/B^b

C/E

A⁵/E⁵

CSUS
D⁵SUS

C/B

A-

E^b/B^b

C/B

E^b/B^b

A^bΔ7

E⁵Δ7

AΔ

C/E

A^b/E^b

CSUS

C/B

A- B⁵SUS
with 3

AΔ7

E^bΔ7

AΔ

50

60

70

50

60

70

50
60
70

50

50

60

70

BUDLIES

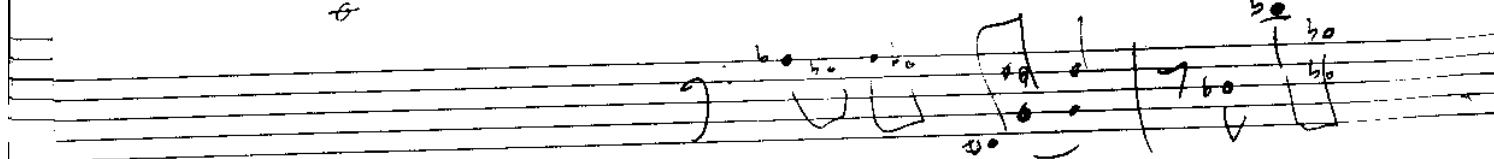
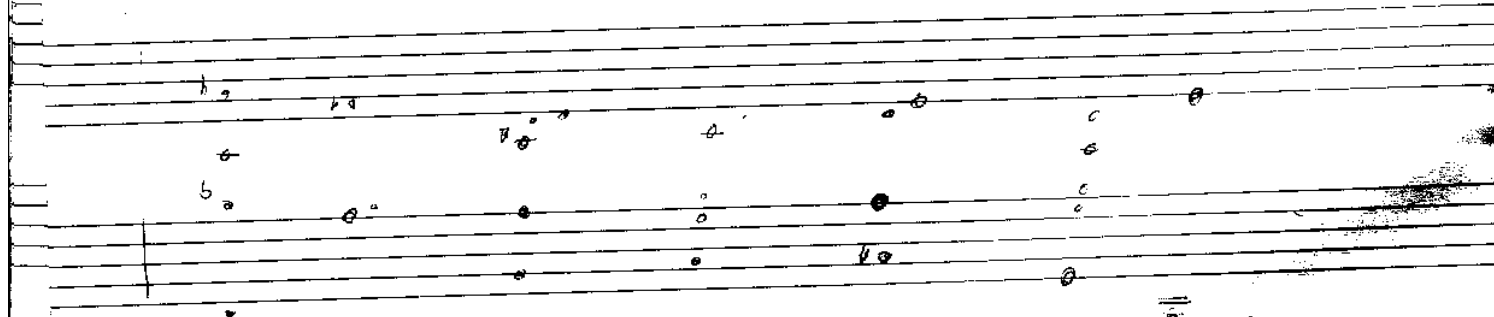
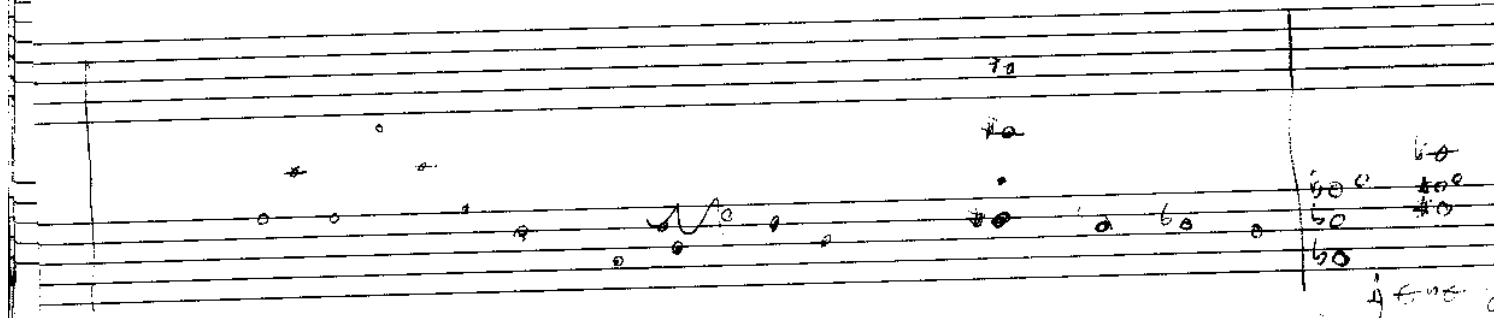
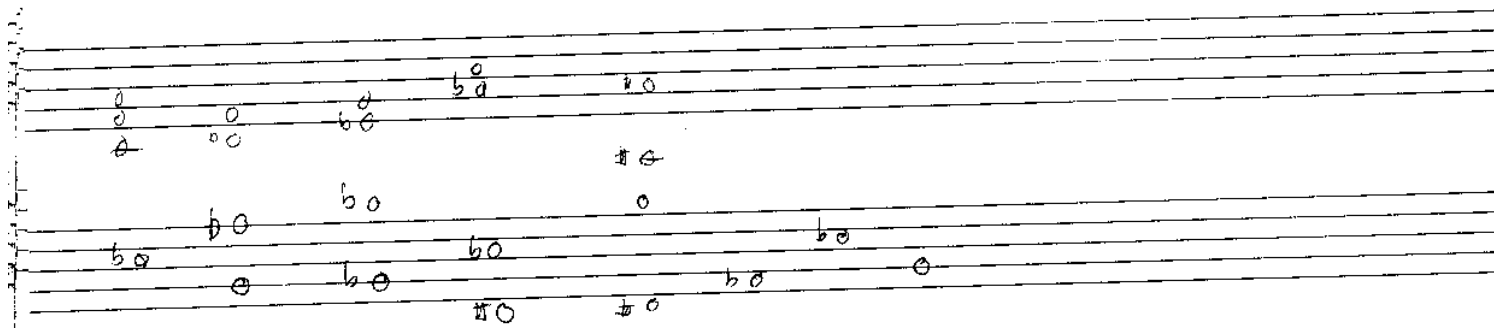
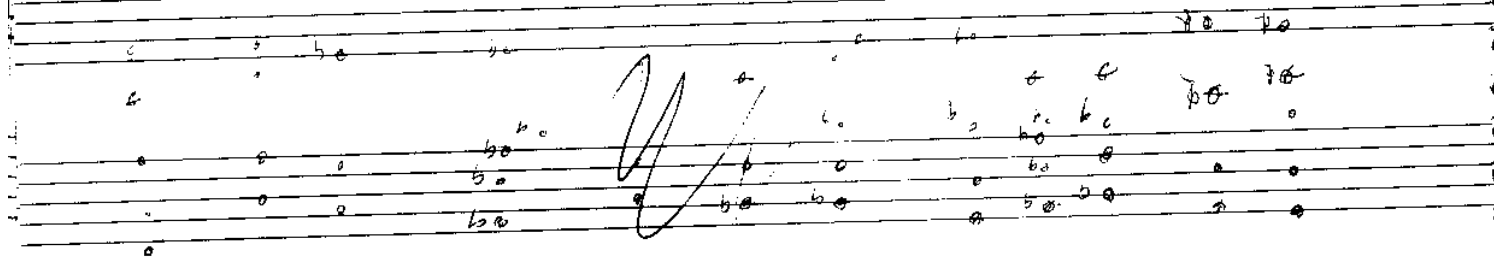
Handwritten musical notation for the first system of 'BUDLIES'. The notation is written on five staves. The first staff contains a treble clef and a key signature of one flat (B-flat). The second staff contains a bass clef and a key signature of one flat (B-flat). The third staff contains a treble clef and a key signature of one flat (B-flat). The fourth staff contains a bass clef and a key signature of one flat (B-flat). The fifth staff contains a treble clef and a key signature of one flat (B-flat). The notation includes various notes, rests, and accidentals, with some notes marked with '3', '2', and '1' indicating fingerings or counts. There are also some markings like 'ba' and 'be'.

Handwritten musical notation for the second system of 'BUDLIES'. The notation is written on five staves. The first staff contains a treble clef and a key signature of one flat (B-flat). The second staff contains a bass clef and a key signature of one flat (B-flat). The third staff contains a treble clef and a key signature of one flat (B-flat). The fourth staff contains a bass clef and a key signature of one flat (B-flat). The fifth staff contains a treble clef and a key signature of one flat (B-flat). The notation includes various notes, rests, and accidentals, with some notes marked with '3', '2', and '1' indicating fingerings or counts. There are also some markings like 'ba' and 'be'.

Handwritten musical notation for the third system of 'BUDLIES'. The notation is written on five staves. The first staff contains a treble clef and a key signature of one flat (B-flat). The second staff contains a bass clef and a key signature of one flat (B-flat). The third staff contains a treble clef and a key signature of one flat (B-flat). The fourth staff contains a bass clef and a key signature of one flat (B-flat). The fifth staff contains a treble clef and a key signature of one flat (B-flat). The notation includes various notes, rests, and accidentals, with some notes marked with '3', '2', and '1' indicating fingerings or counts. There are also some markings like 'ba' and 'be'.

in over the hill

Black sea



grave

Handwritten musical notation on a five-line staff. Above the staff, the following labels are written: $C7$, $D7$, $C7$, $C7$, $C7$. The notation includes various notes (circles with stems) and accidentals (sharps, flats, naturals). Below the staff, the label $F\#$ is written.

Handwritten musical notation on a five-line staff. Above the staff, the label $B - \Delta$ is written. The notation includes various notes and accidentals.

Handwritten musical notation on a five-line staff. Above the staff, the following labels are written: F , $F7$, $F\# -$, $G67$, $G -$, $G\#7 + u$. The notation includes various notes and accidentals.

Handwritten musical notation on a five-line staff. Above the staff, the labels D , E , and $A -$ are written. The notation includes various notes and accidentals.

Block sender bridge

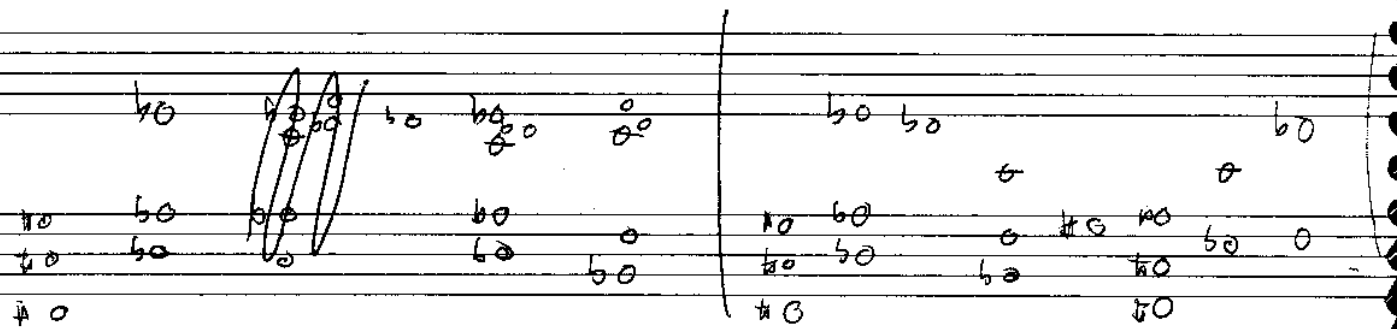
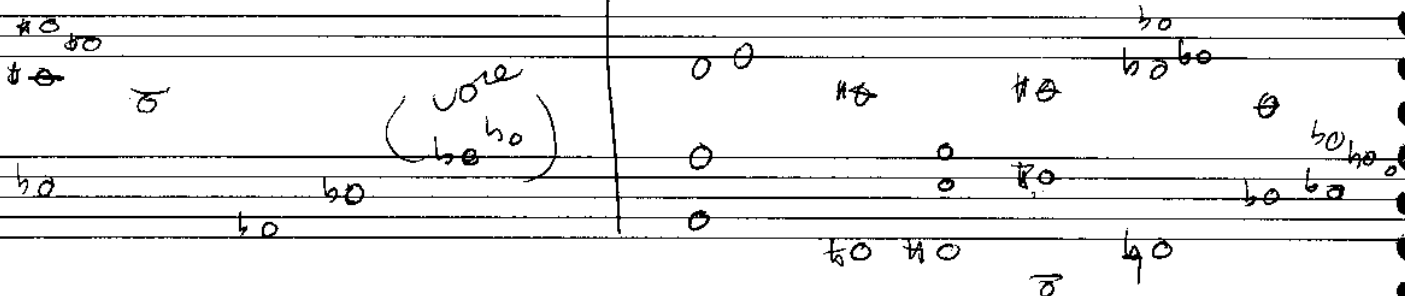
D, F#m, A, E, B, C



the fine time

A⁵ - A⁵/F⁷ C⁵ - 11

Soul of the 80's



FINE TIME

I F⁺ C^b B A C⁺
V A^b - B^b - B C C/B^b
V A^b - B^b - B C C/B^b

C E E7 D/A A F⁺ B straight
I F⁺ C^b B A C⁺
V A^b - B^b - B C C/B^b

C E E7 D/A A F⁺ B 4
B C⁺ - D⁺ F⁺ F^b D^b

C chorus E E7 D/A A F⁺ B 4
I F⁺ C^b B A C⁺ 4x

57 m

FINZI Amio

K7

07

o
f o

o f o
o o

o
o o o o

o
o o o o

o o o o

o

o

o o

o o o o

o

o o o o

o

see

12 keys

o o o o o o o o
f o o o o o o o

o o o o o o o o
o o o o o o o o

o o o

o o o
o o o

o o

B pedal

o o

o

o o

o o

o o

(A B C D E F G)

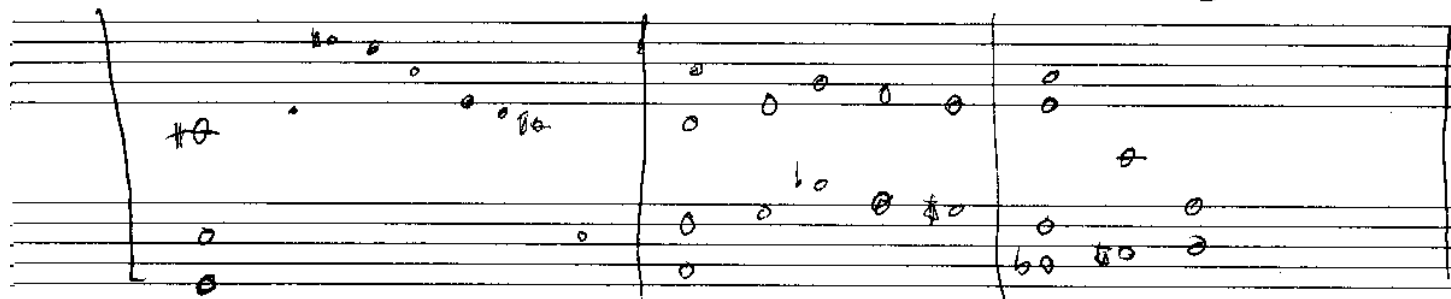
0 1 2 3 4 5 6 7 8 9 A# B

1 2 3 4 5 6 7 8 9

2 bars

fin 2:
2 bars

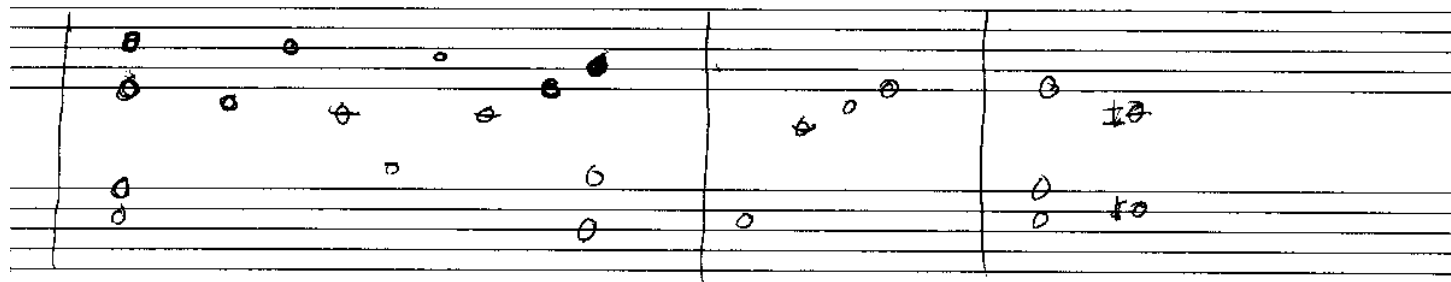
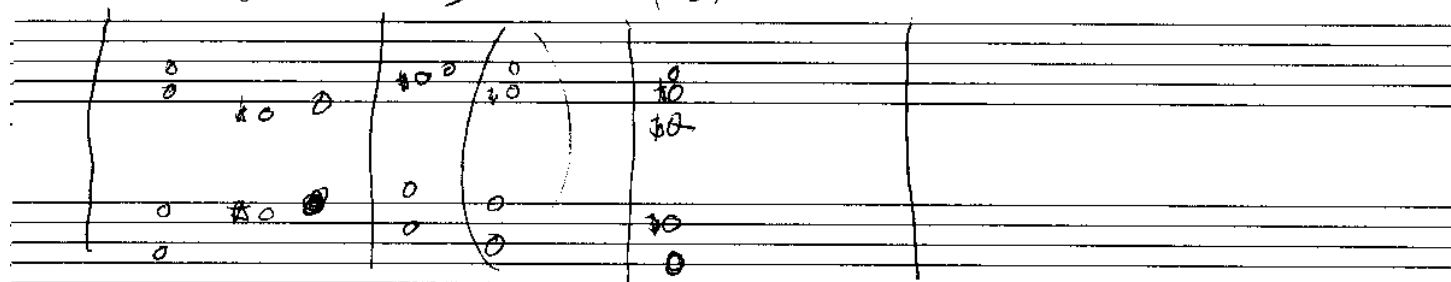
2 bars



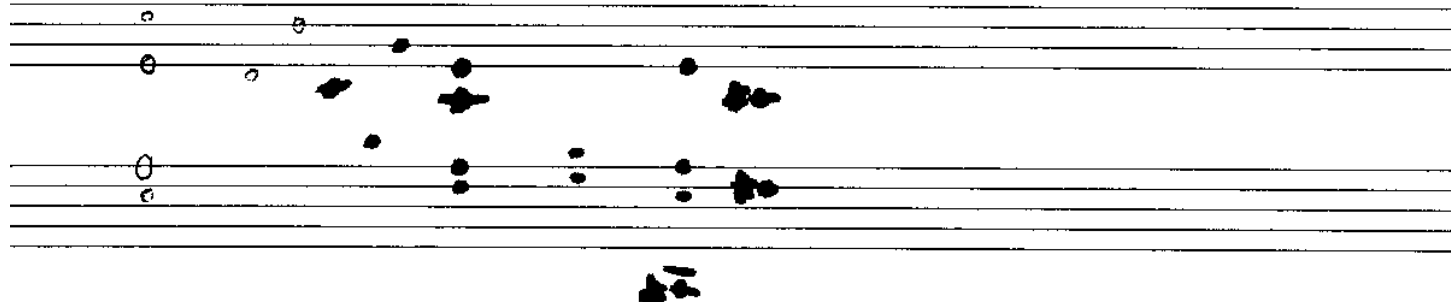
2' bars

1

(2)



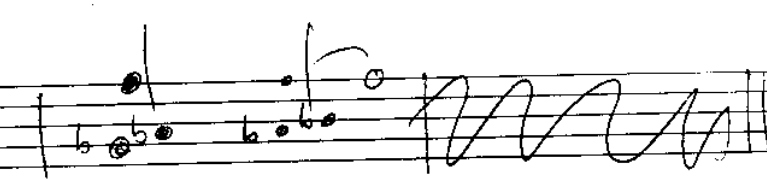
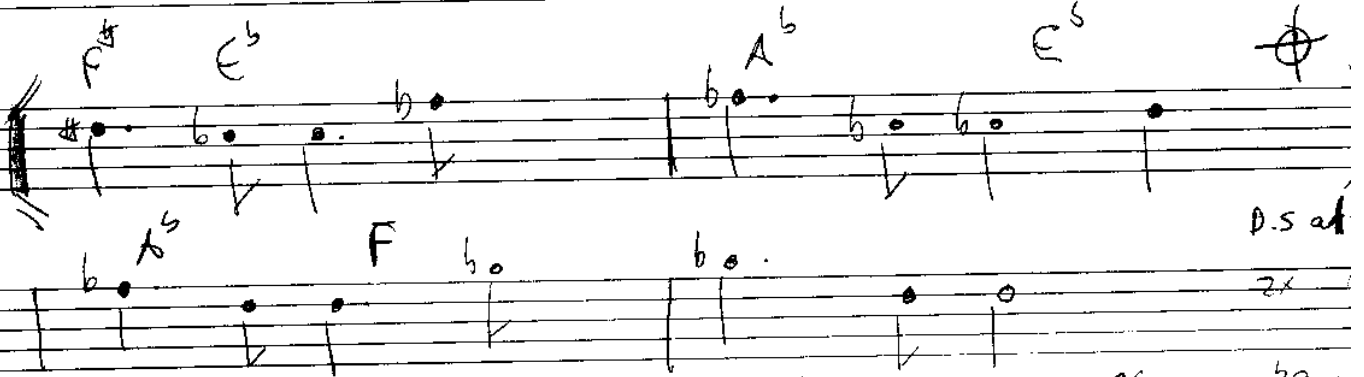
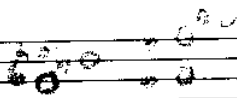
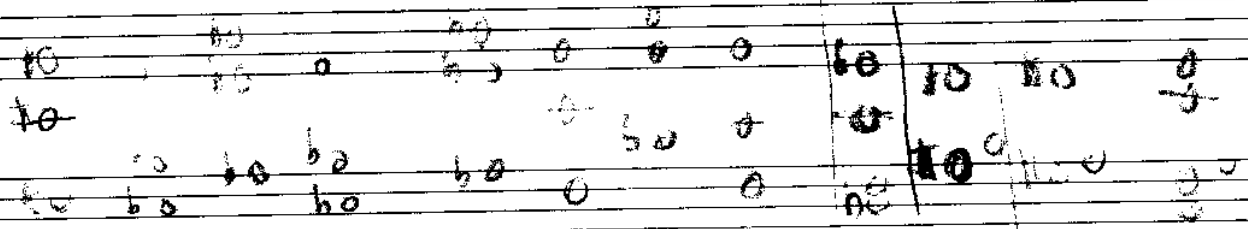
b7



fagot name

The image displays five staves of handwritten musical notation, likely for a fagot (bassoon) part. The notation is written in a cursive, handwritten style. The first staff begins with a treble clef and contains several measures of music, including notes, rests, and slurs. The second staff continues the notation, featuring more complex phrasing with slurs and ties. The third staff shows a continuation of the melody, with notes and rests. The fourth staff includes a key signature change to one flat (B-flat) and continues the musical line. The fifth staff concludes the notation with a final measure and a double bar line. The paper is aged and shows some wear along the edges.

GET IT GROOVE



GLOBAL SPADE

B^b

Handwritten musical notation on a five-line staff, featuring various chords and notes. The notation includes:

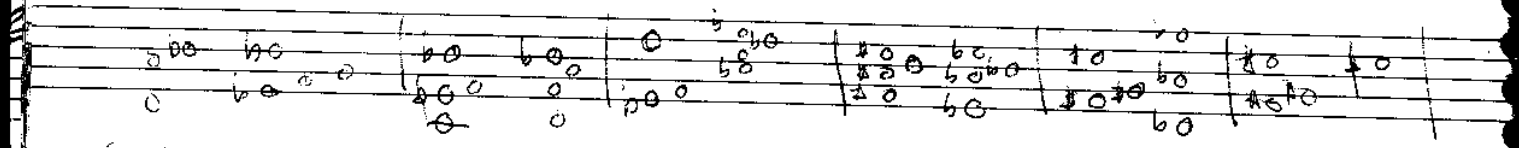
- Chords: F⁻, E^b, D^b, B^b7, A^b, C[#] SUS, B^b-(b6), F[#], E^b, E, G⁻, B^b, C⁻.
- Notes: Quarter notes, eighth notes, and sixteenth notes, some with accidentals (sharps, flats, naturals).
- Other markings: A bracketed section of notes, a double bar line, and a final measure with a double bar line.

GLOBAL SPADE

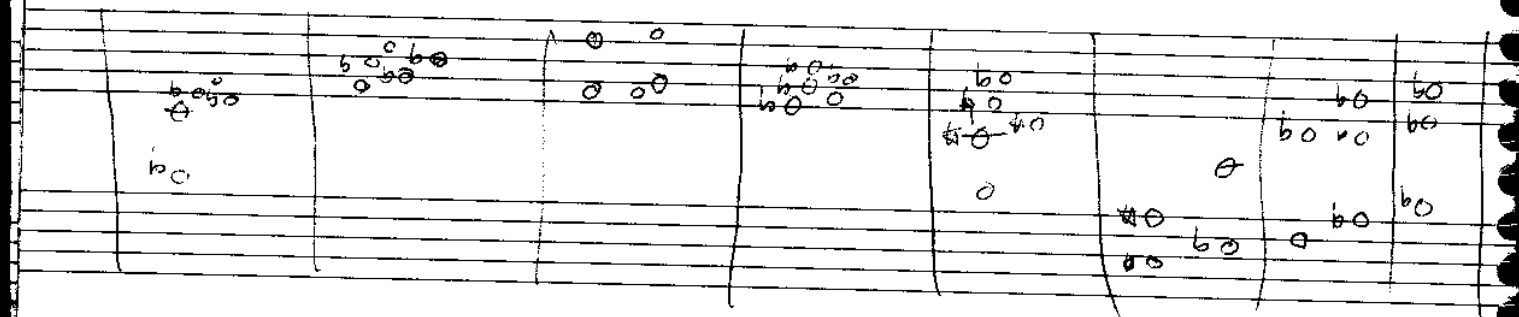
BAS 5

Handwritten musical notation on a five-line staff, featuring various chords and notes. The notation includes:

- Chords: E^b , D^b7 , B^bD7 , A^b7 , $F^{\#}A7$, B^b-7 , E^b-7 , D^b7 , $BSus$, $A^b-7(b6)$, $E6$, $C^{\#}$, D , $F^{\#}$, $F-$, A^b7 , $F^{\#}$, B^b-7 , A^b7Sus .
- Notes: Various musical notes (half notes, quarter notes, eighth notes) are written on the staff, some with accidentals (sharps, flats, double flats).
- Other markings: A double bar line is present near the end of the staff.



(no)



HEAD PHONES ON

B^b E^b/B^b C^b G- C- D^b B^b A^b B^b(B^b) D^b F^b7 A^b C^b/B^b B^b- F-

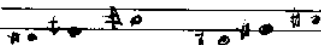
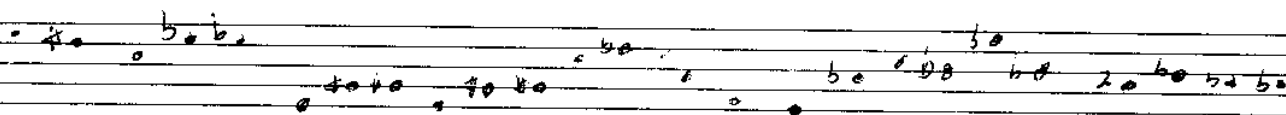
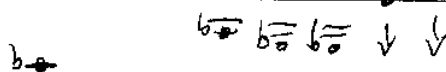
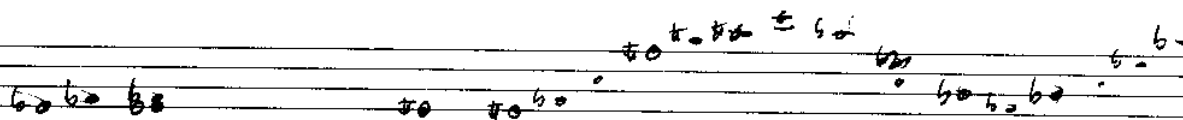
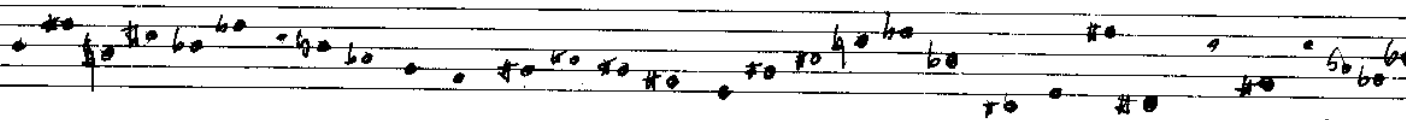
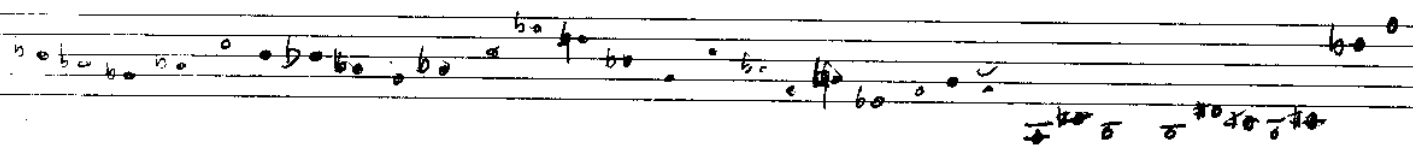
B^b C E- C[#]7 B^b7 B^b7/E^b

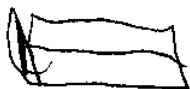
A^b7 B^b- F[#]/F^b A^b A^b/F^b F[#]69

B^b E^b/B^b B^b5/5 G- C- D^b B^b7 A^b E^b-/B^b D^b F^b7 A^b

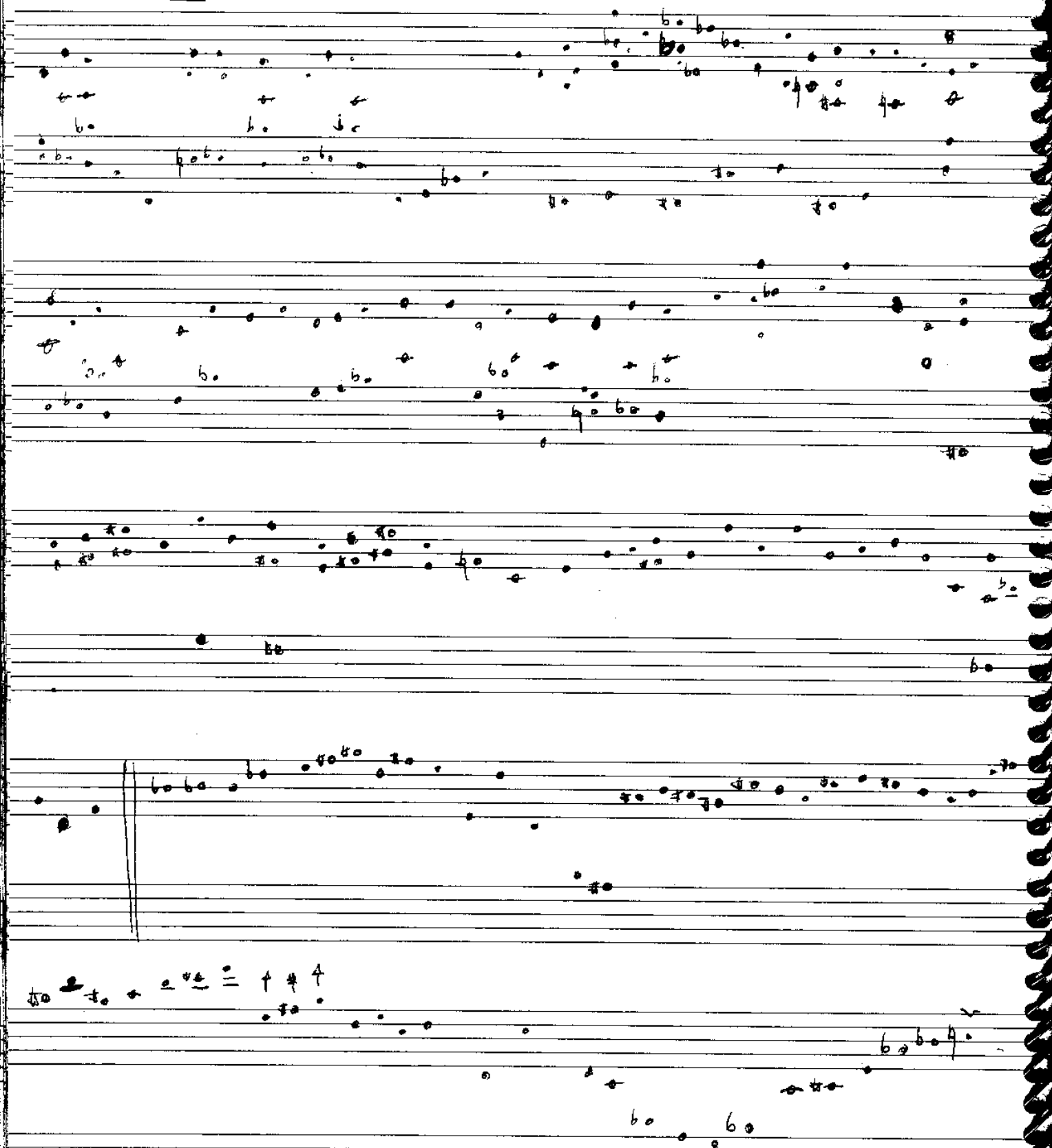
B^b7/E^b F[#] A^b B^b- F[#]/F^b A^b F[#]/F^b F[#]69

holds not 2

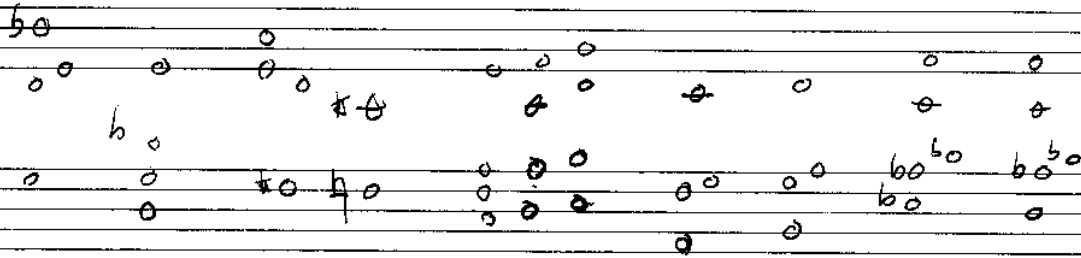




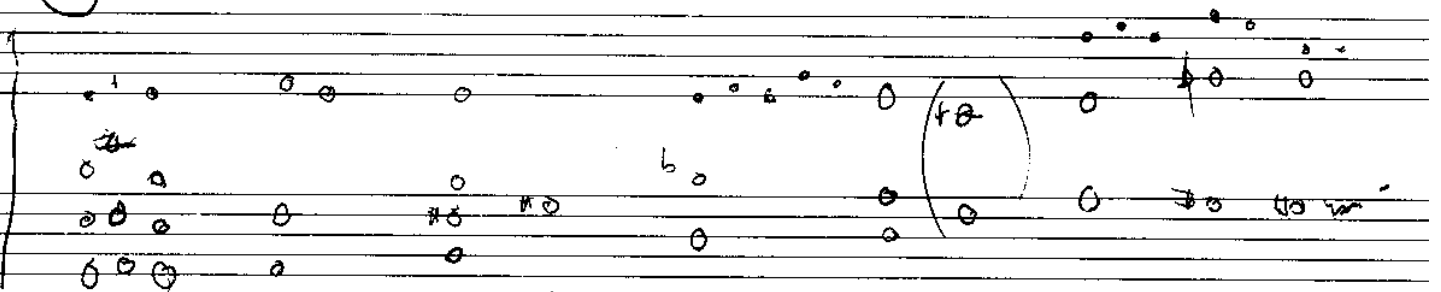
haldswort track 2



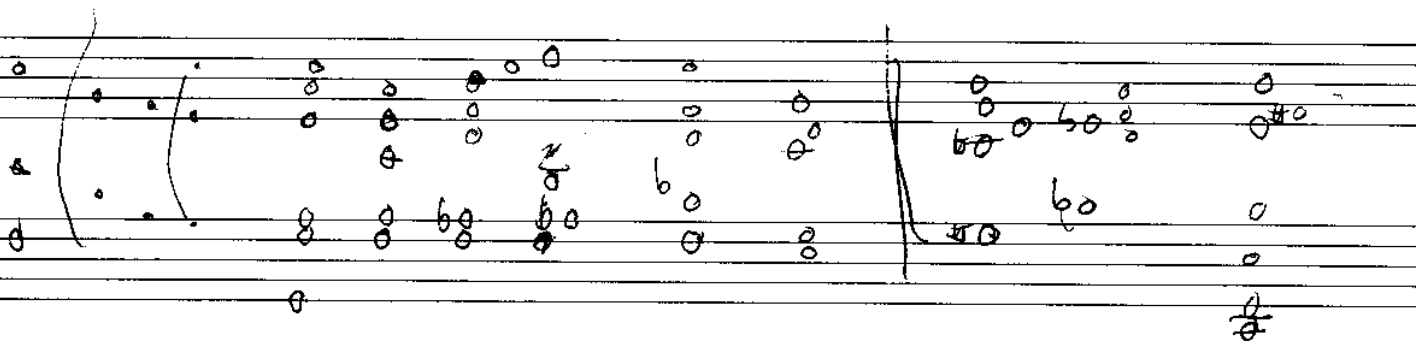
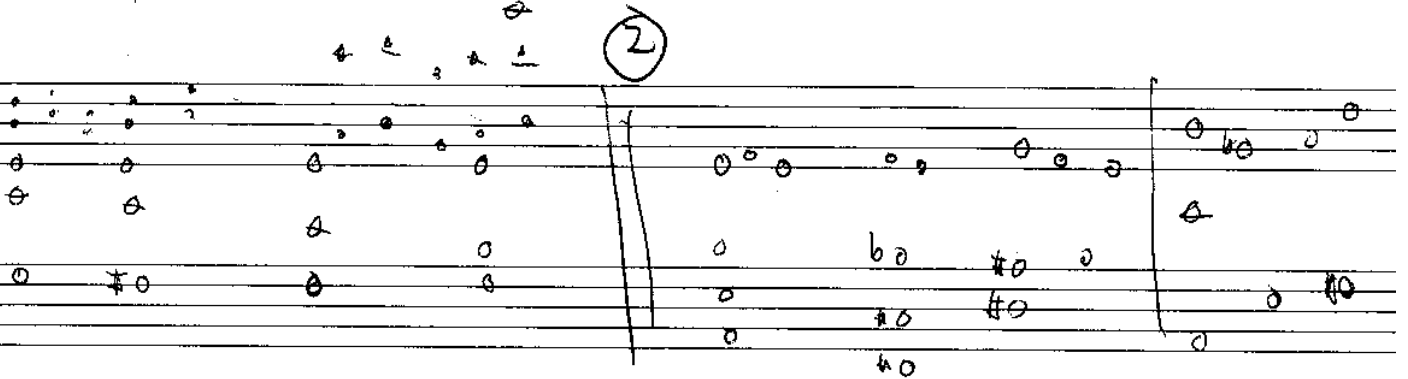
I should care



①



②



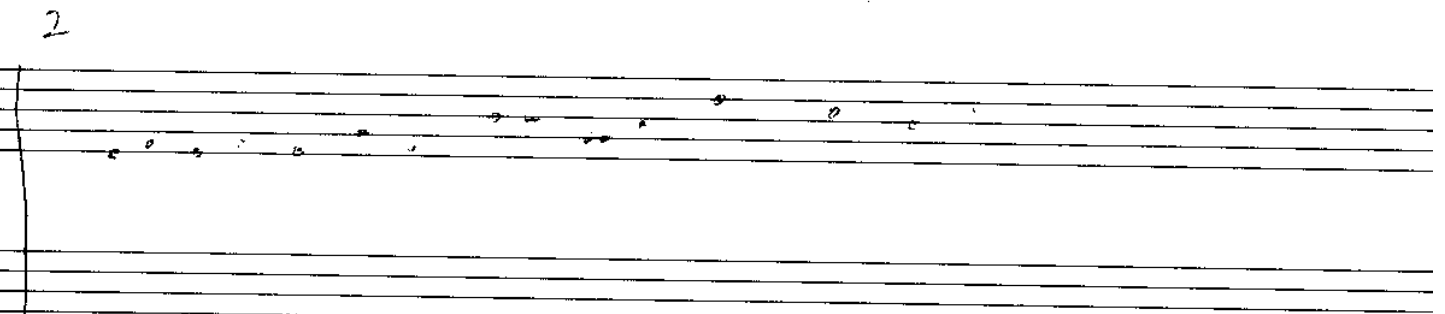
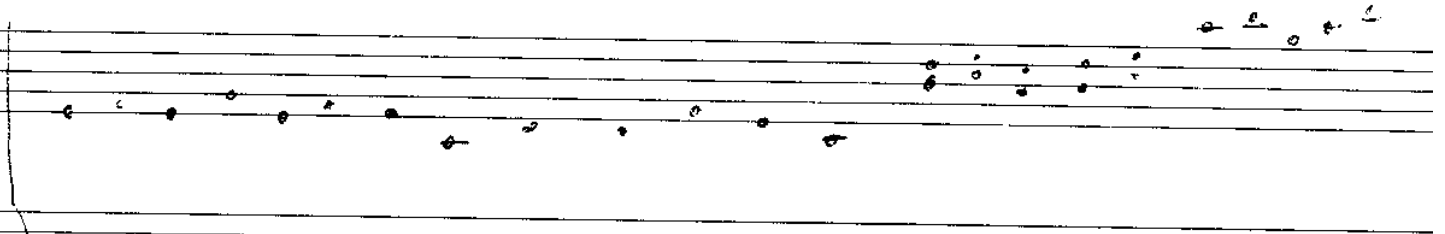
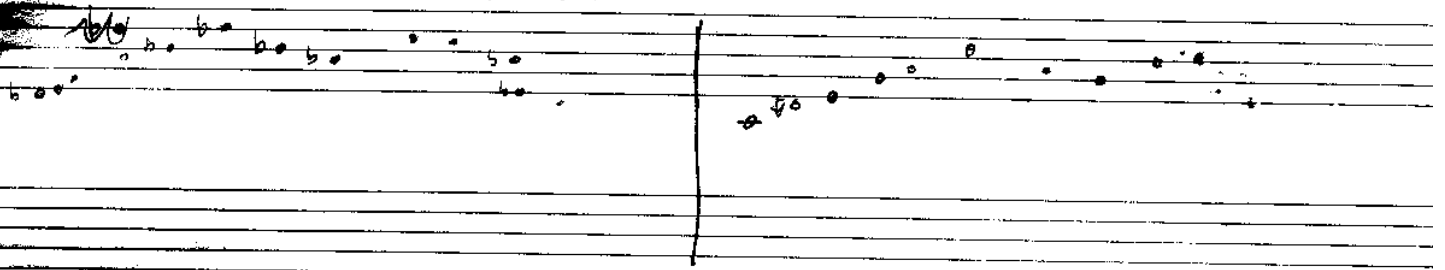
I should care

G- C7

F- Bb7

F# B

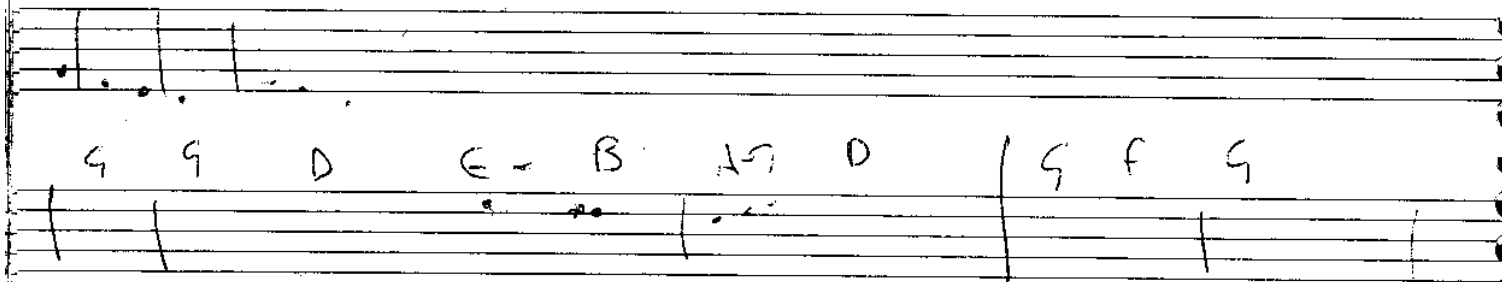
E A



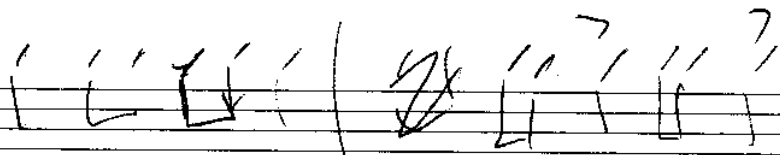
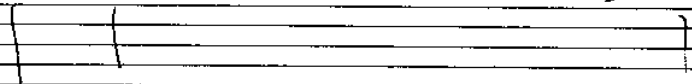
I still love her

D

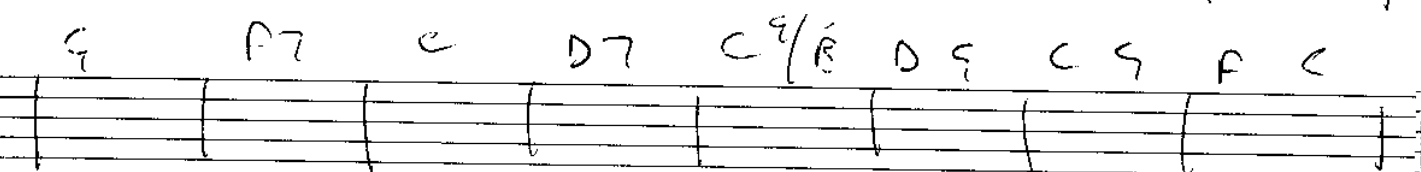
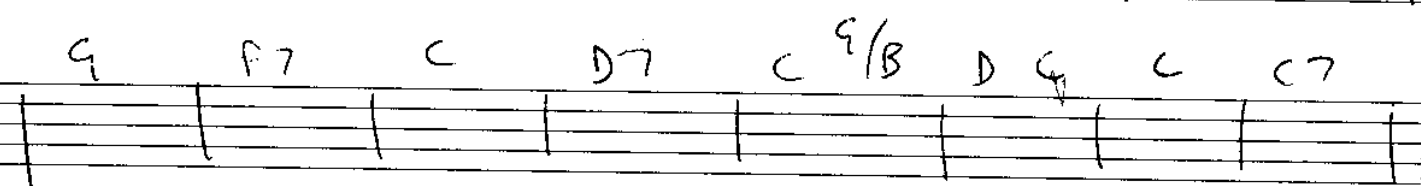
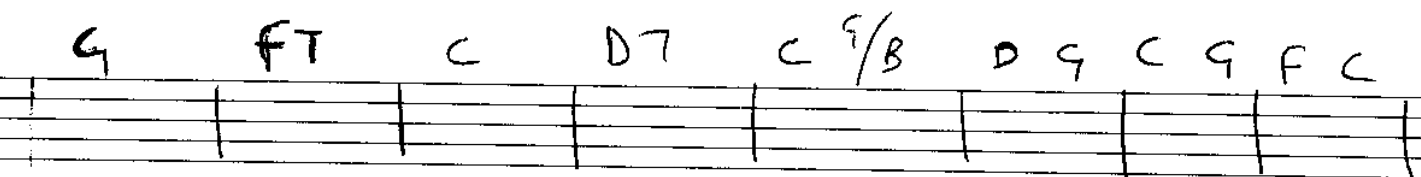
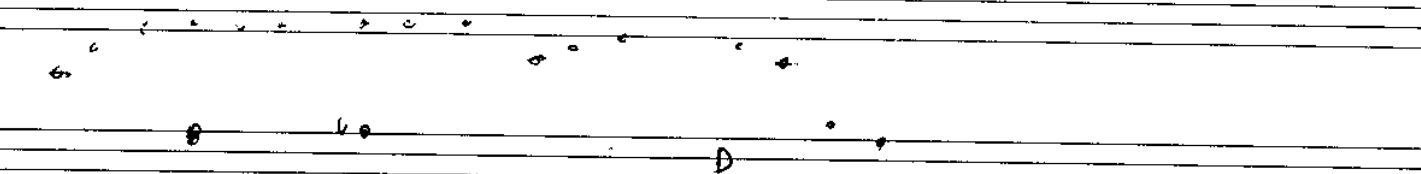
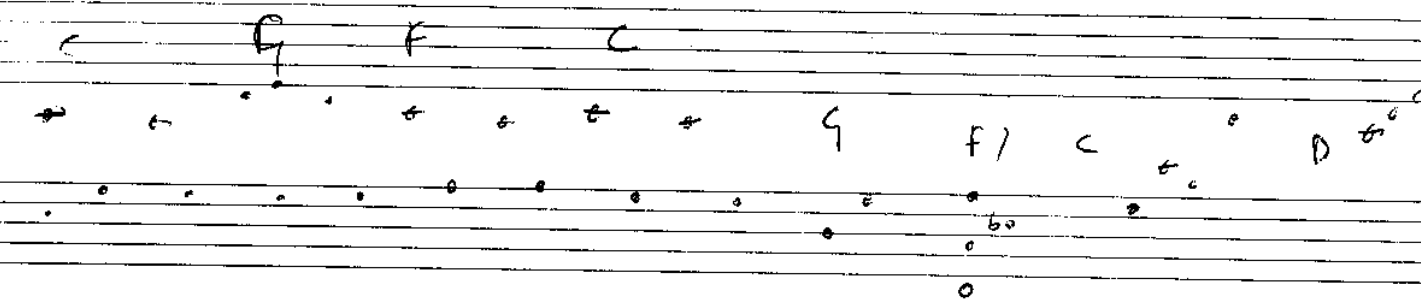
D



G G E- A C D



III follow the sun



D^b/C

F/C

D^b/C

D-/C

G7/C

D-/C

F⁹/C

C

F/A

F

A^bΔ7 + S

C

F

C

A-

F

D-

A-

D/F[#]

F

C/B^b

G-

A^bB^b

D-

D-/C

C⁹

D

D/F[#]

G

C

D^b/C

C7

F

F/C

D7

D7/F[#]

Gsus

Fsus

C

INFINITE WISDOM (I AM ABOVE TIME)

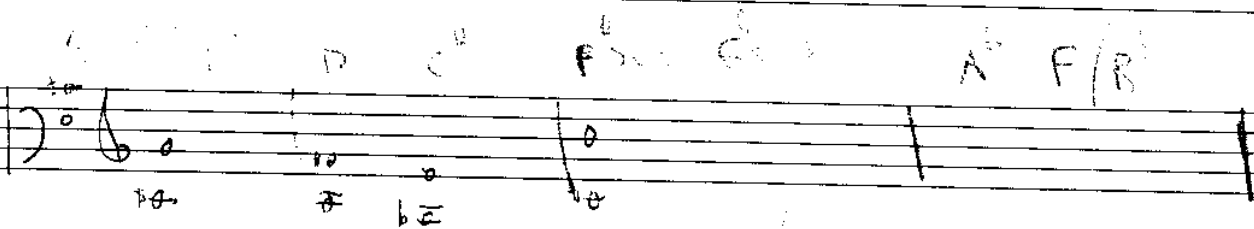
be to

D groove

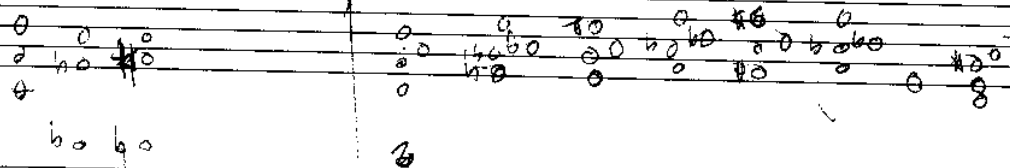
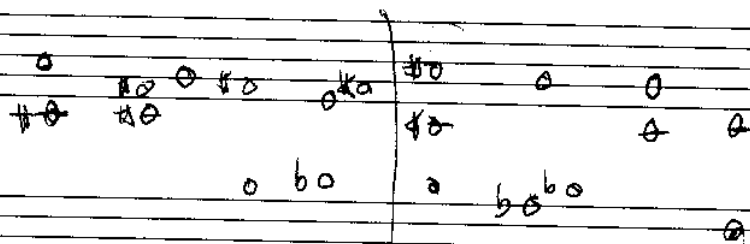
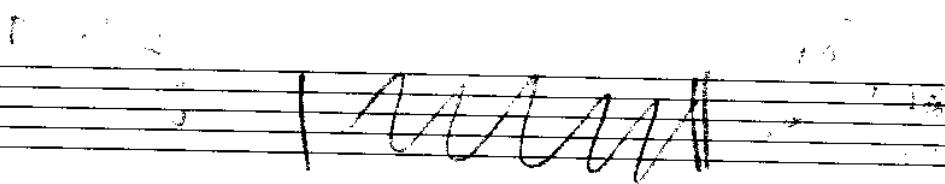
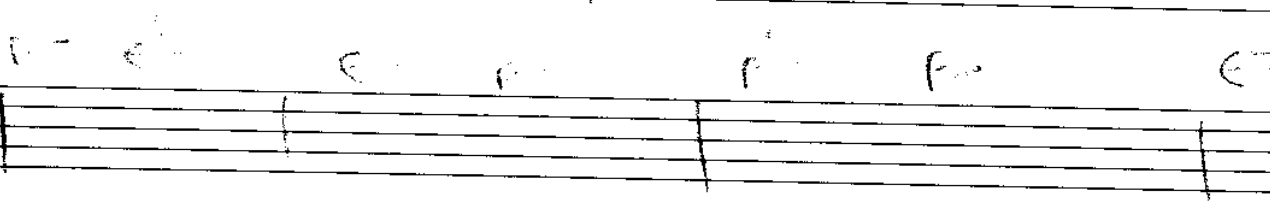
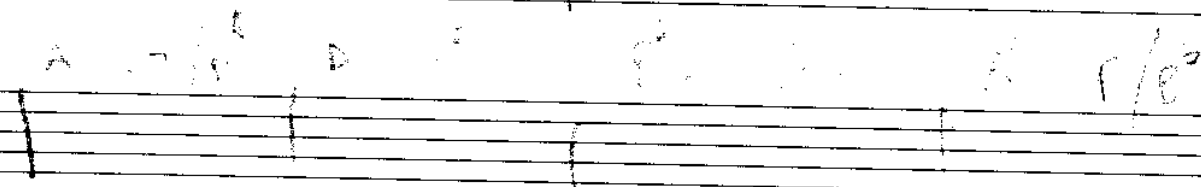
D scale		D E
C scale		
B scale		

minor
or major
or 7th

infinite wisdom



F# G A



D J. B. B^b

Chords and notes visible in the first system:

- Measure 1: D, B-, E-, F/C
- Measure 2: D, B-, E-, G-
- Measure 3: D, B-, E-, B^b
- Measure 4: D, B-, E-, B/D#

Chords and notes visible in the second system:

- Measure 5: D, B-, E-, C#/F
- Measure 6: D, B-, E-, A/E
- Measure 7: D, B-, E-, B/D#

INTERLUDE 2 bars D B F[#] E^b F B^b

ESUS

F[#] D G

JED SHED

Handwritten musical notation for the first system of 'JED SHED'. The notation is on two staves, with various notes, rests, and handwritten annotations including a 'b' with a flat symbol and some numbers.

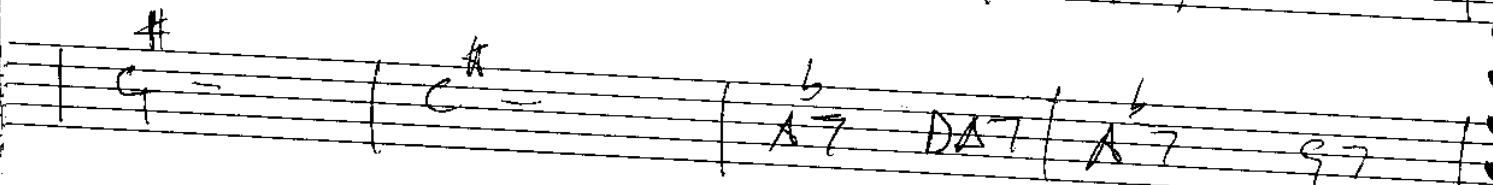
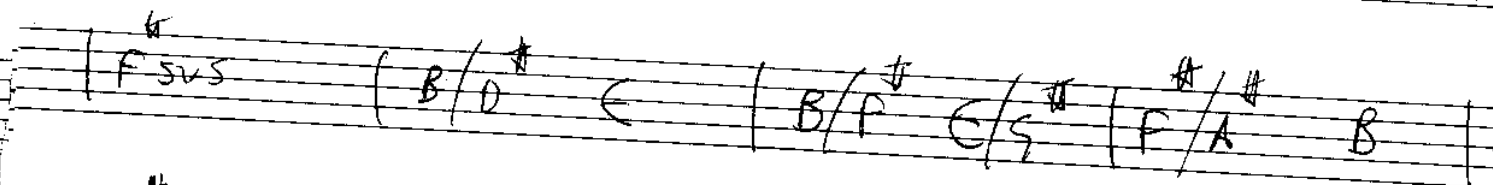
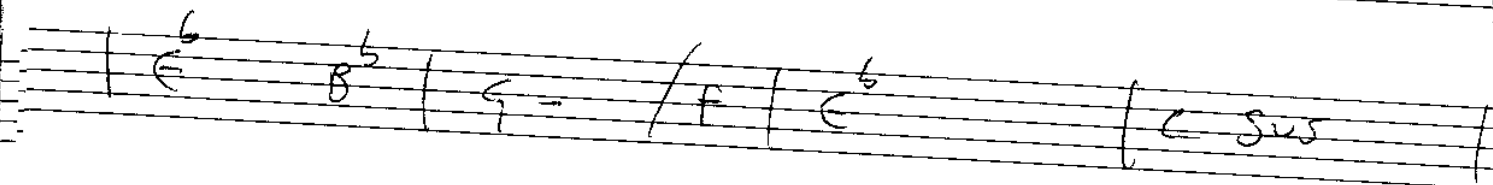
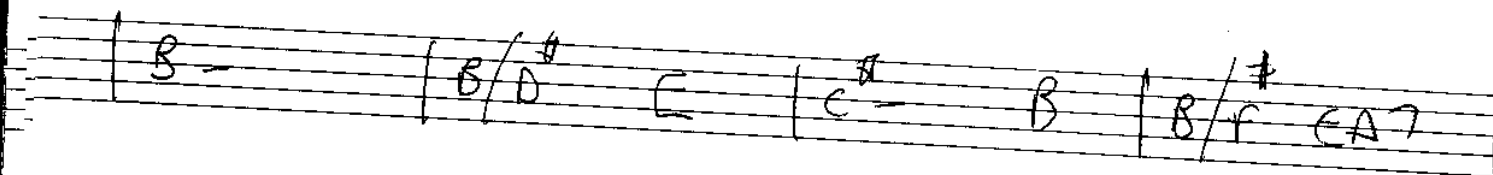
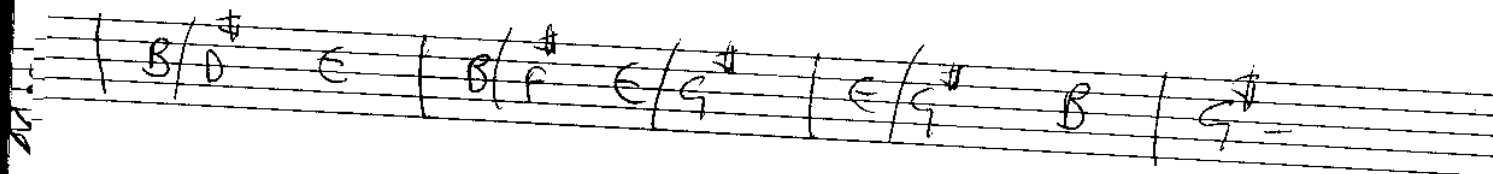
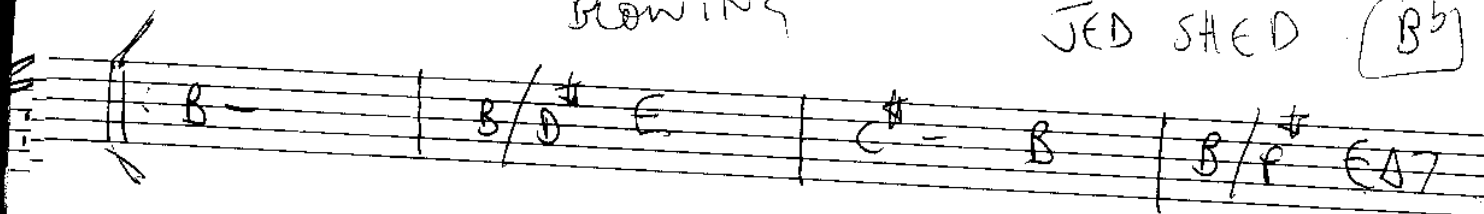
Handwritten musical notation for the second system of 'JED SHED'. This system is primarily composed of chord symbols written above the staves, with some notes and rests interspersed. The chords include:

- A-
- A/C⁺ D
- B-
- A
- A/E D⁺7
- A/C⁺ D
- A/E D/F⁺ E/G⁺ A
- F-
- A-
- A/C⁺ D
- B-
- A
- A/E D⁺7
- D^b A^b
- F- / E^b
- D^b Δ
- B^b SUS
- E SUS
- A/C⁺ D
- A/E D/F⁺ E/G⁺ A
- A⁺
- B-
- E/F⁺ C⁺7 F⁺7 F⁺7 E^b7+11

The notation is spread across two staves, with the chord symbols written above the top staff and some notes and rests written below the bottom staff.

ROWING

JED SHED (B^b)



JED SHED

BASS

1

2

Handwritten musical notation for the first system, measures 1-6. The notation is on a five-line staff. Measure 1 has a whole note with a sharp sign. Measure 2 has a whole note with a sharp sign and a flat sign. Measure 3 has a whole note with a sharp sign and a flat sign. Measure 4 has a whole note with a sharp sign and a flat sign. Measure 5 has a whole note with a sharp sign and a flat sign. Measure 6 has a whole note with a sharp sign and a flat sign.

Handwritten musical notation for the second system, measures 7-12. The notation is on a five-line staff. Measure 7 has a whole note with a flat sign. Measure 8 has a whole note with a flat sign. Measure 9 has a whole note with a flat sign. Measure 10 has a whole note with a flat sign. Measure 11 has a whole note with a flat sign. Measure 12 has a whole note with a flat sign.

Handwritten musical notation for the third system, measures 13-18. The notation is on a five-line staff. Measure 13 has a whole note with a flat sign. Measure 14 has a whole note with a flat sign. Measure 15 has a whole note with a flat sign. Measure 16 has a whole note with a flat sign. Measure 17 has a whole note with a flat sign. Measure 18 has a whole note with a flat sign.

Handwritten musical notation for the fourth system, measures 19-24. The notation is on a five-line staff. Measure 19 has a whole note with a flat sign. Measure 20 has a whole note with a flat sign. Measure 21 has a whole note with a flat sign. Measure 22 has a whole note with a flat sign. Measure 23 has a whole note with a flat sign. Measure 24 has a whole note with a flat sign.

Handwritten musical notation for the fifth system, measures 25-30. The notation is on a five-line staff. Measure 25 has a whole note with a flat sign. Measure 26 has a whole note with a flat sign. Measure 27 has a whole note with a flat sign. Measure 28 has a whole note with a flat sign. Measure 29 has a whole note with a flat sign. Measure 30 has a whole note with a flat sign.

KIDDOS

they ra

1 pler D- D- C S- b0 b0 E sus D^b sus

(b0) b0 a0 a0 b0 b0 b0 b0

(A-)

seal 5

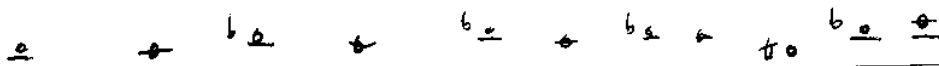
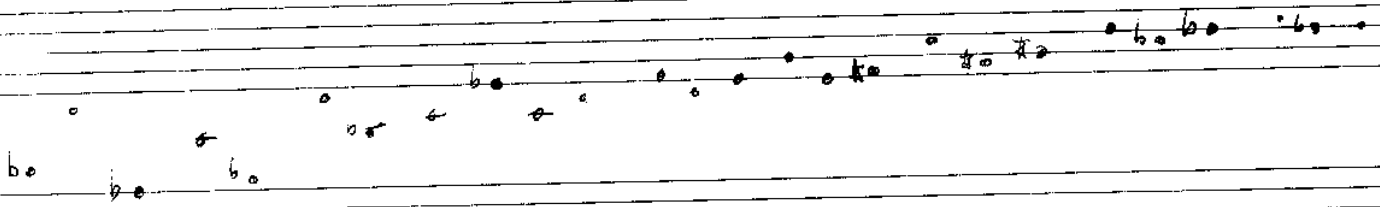
A

③

[Handwritten notes at the bottom of the page, mostly illegible due to blurring.]

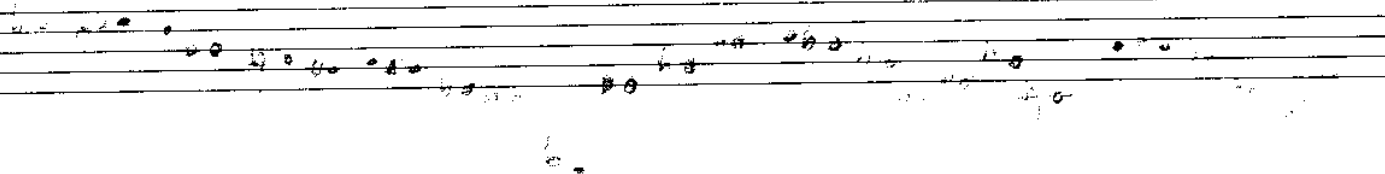
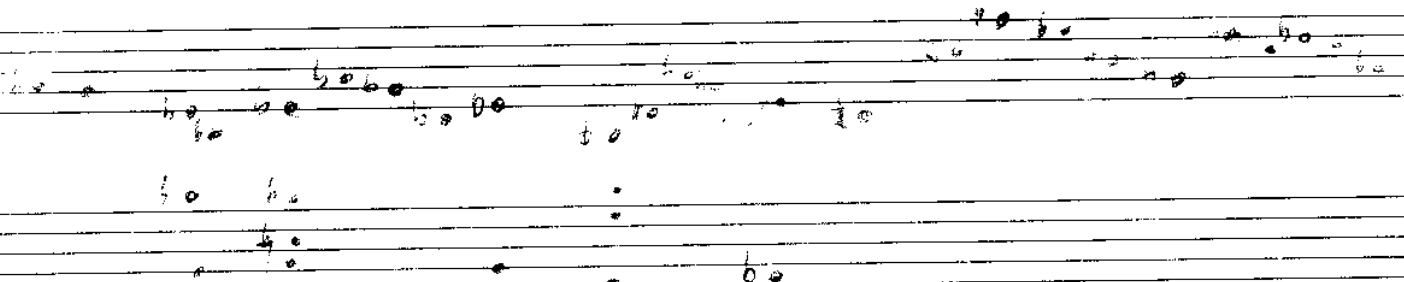
606060

kirkland 4



KIRLCAND

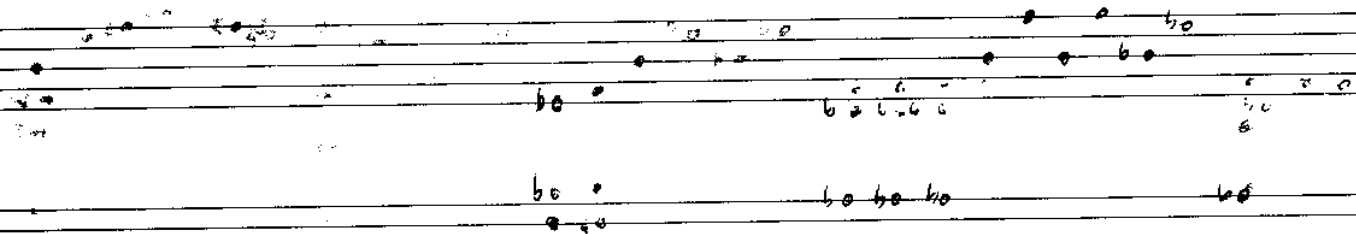
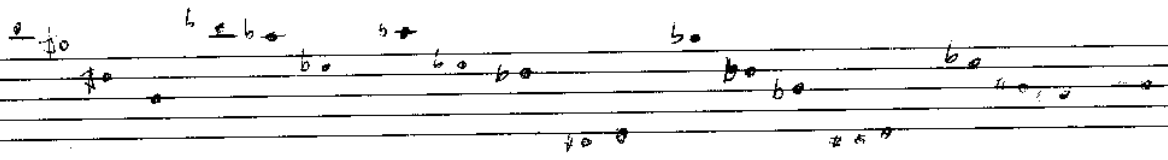
①



E⁶



M



E-

D^b

B

A^b

Bsus

E/C[#]

E

C[#]

D

F[#]

F-

A^s

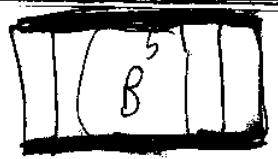
F[#]

B^s

A^b

MA7 2001

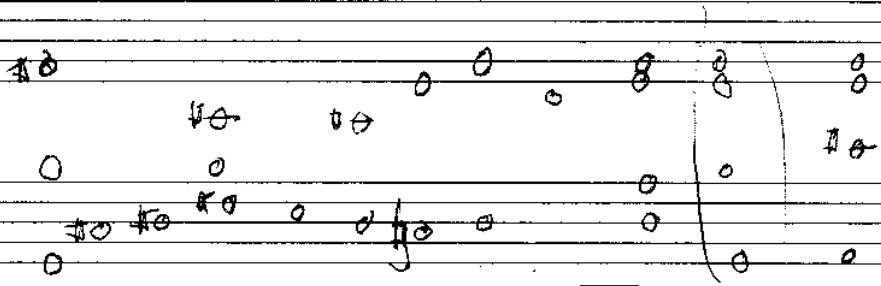
PACIFICA (the theme)



JUN 21

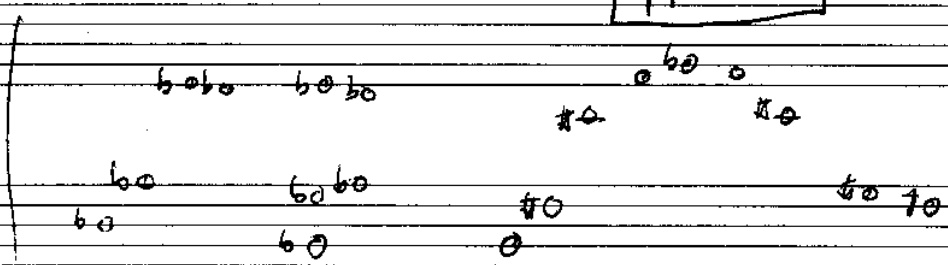
PROM

Could be so nice to come here
to



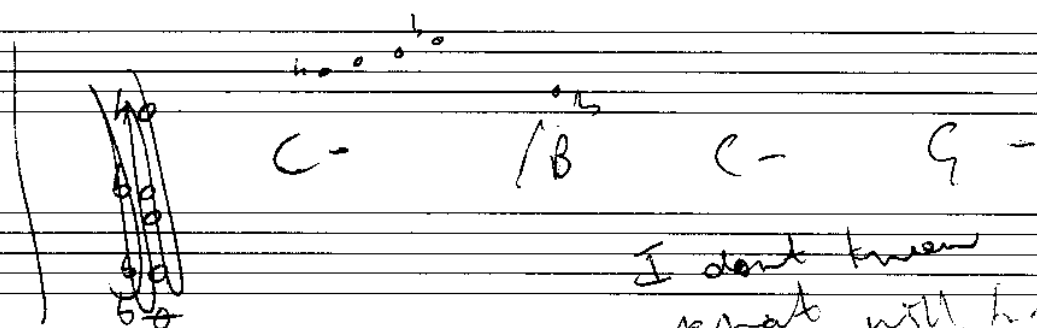
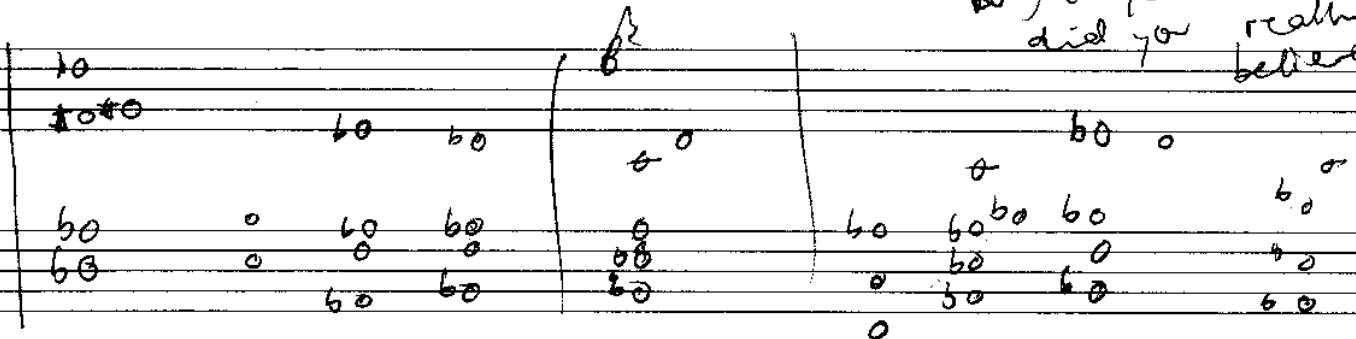
PROM

I gave you
my heart
you can't just
give it back



when you
promised
just to me

what you said
did you really
believe



I don't know
what will happen

scales etc

man had a little

3 2 1 2 3 3 3 2 2 2
E D C D E E E D D D

... ..

3 2 1 2 3 3 3

was
His place with as

E D C D E E E

3 2 2 3 2 1

... ..

E F7 B^b D

C

... ..

scales

C - D

D - A

... ..

B -

etc the major one
sounds better

... ..

C D

F D

D A

... ..

9. out steps

... ..

Shadow of yr smile

(5)
D

Handwritten musical score for "Shadow of yr smile". The score consists of ten staves of music. Chords are indicated above the staves: F#-, B7, E-, A7, A-, D7, GΔ7, CΔ7, F#b, B7, E-, E-/D, C#b, F#7 + 9, F#b/B, B7, F#-, B7, E-, A7, A-, D7, Bb, E7, A-, C-, F7, B-, F7, E7, A7, Eb7, D7, G. The melody is written on the staves with notes, rests, and accidentals.

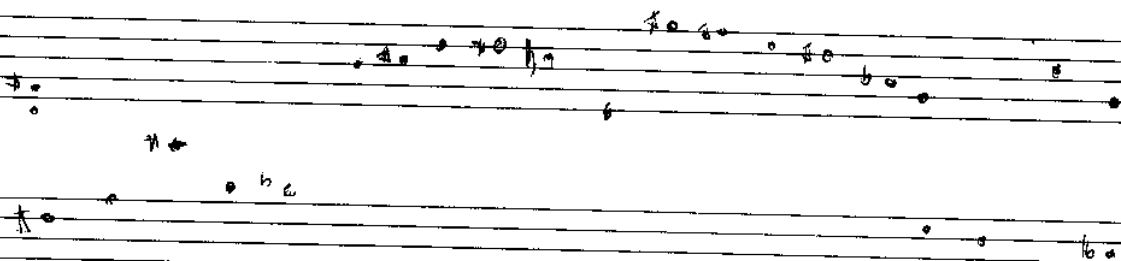
E minor → G6

C minor

A7 → E-b

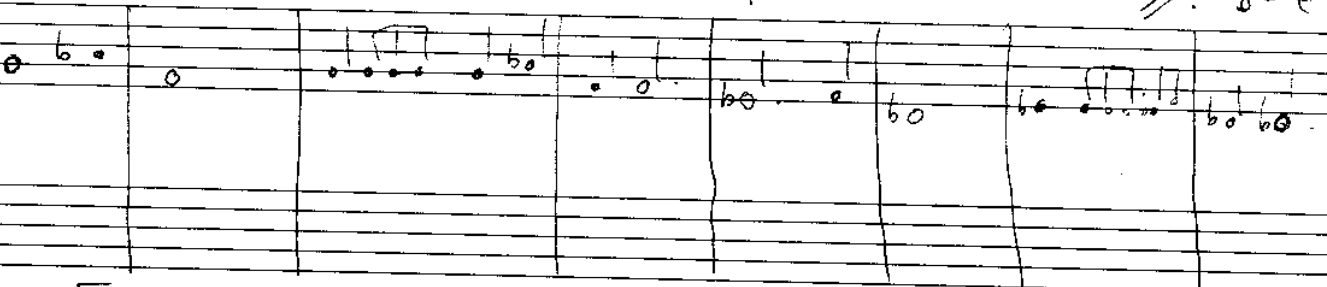
D → D6

Spring ~ Here I



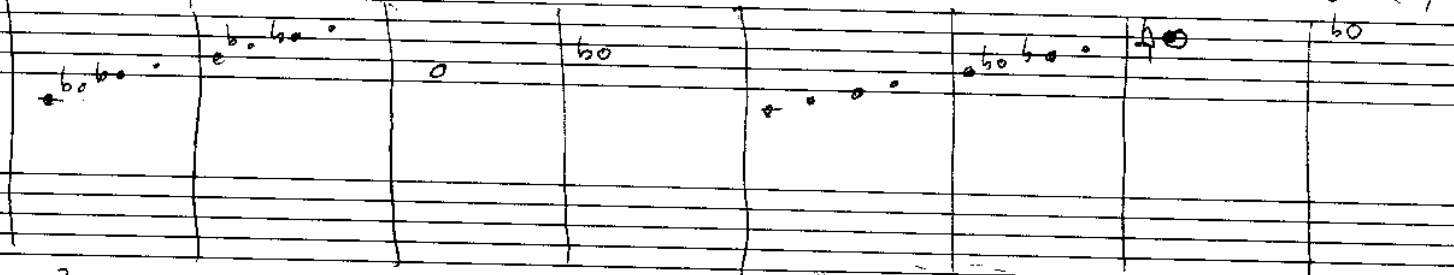
$A^{\flat}O/E^{\flat}$ A^{\flat}/E^{\flat} $A^{\flat}O/E^{\flat}$ A^{\flat}/E^{\flat} $C^{\flat}F^{\flat}$ $B^{\flat}-$

$\frac{2}{\text{tr.}}$ $B^{\flat}-E^{\flat}$

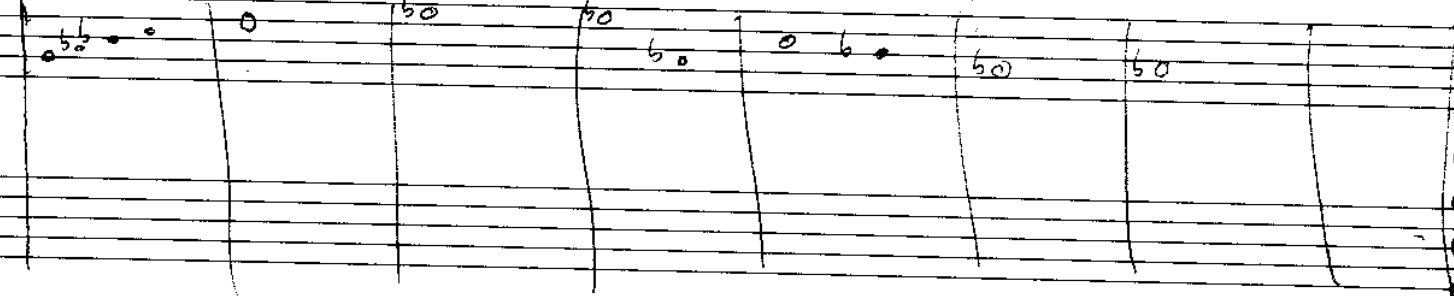


$\frac{1}{A^{\flat}B^{\flat}C^{\flat}D^{\flat}}$ $\frac{1}{C-F-E^{\flat}A^{\flat}D^{\flat}}$ $D^{\flat} \text{ G}^{\flat} \text{ F}^{\flat} \text{ C}^{\flat} \text{ F}^{\flat}$ $F-$

$B-E$ $B^{\flat}-E^{\flat}$



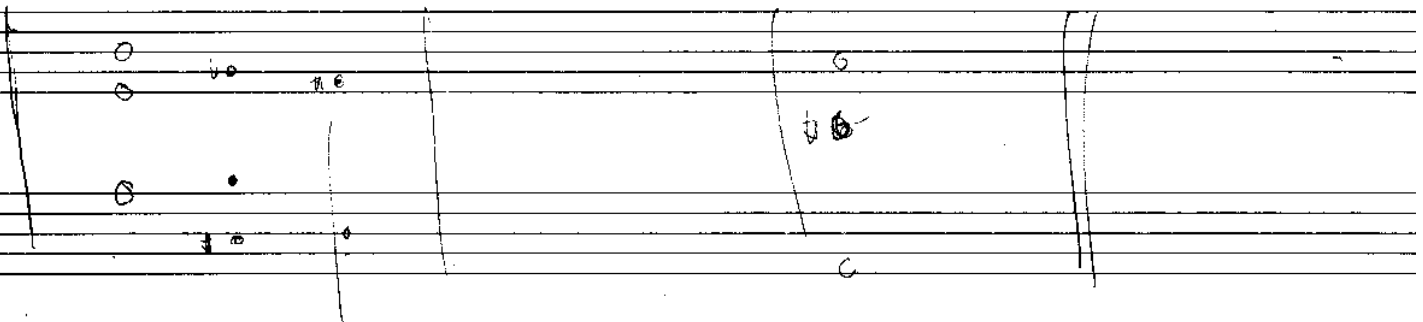
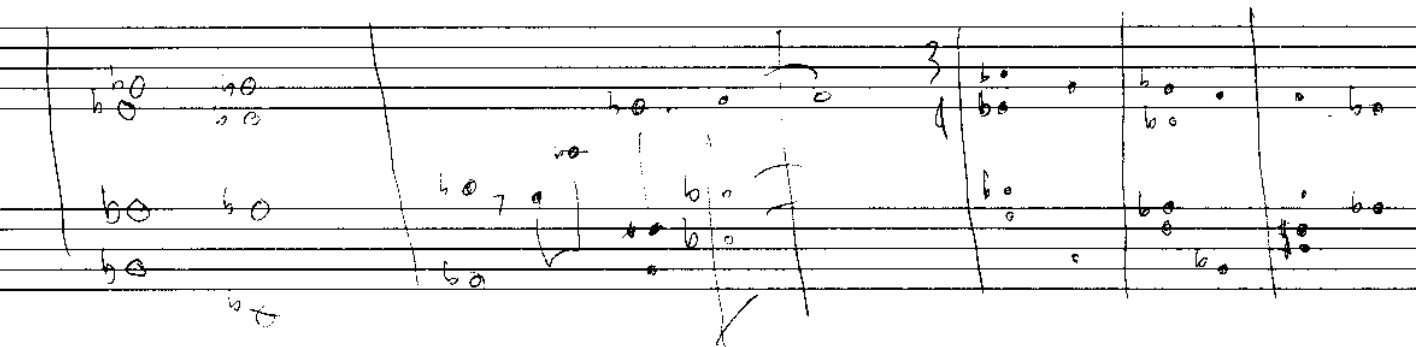
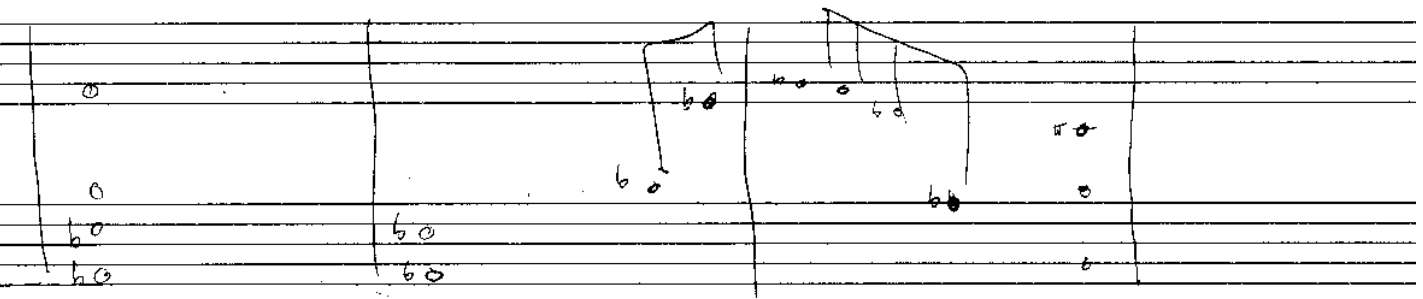
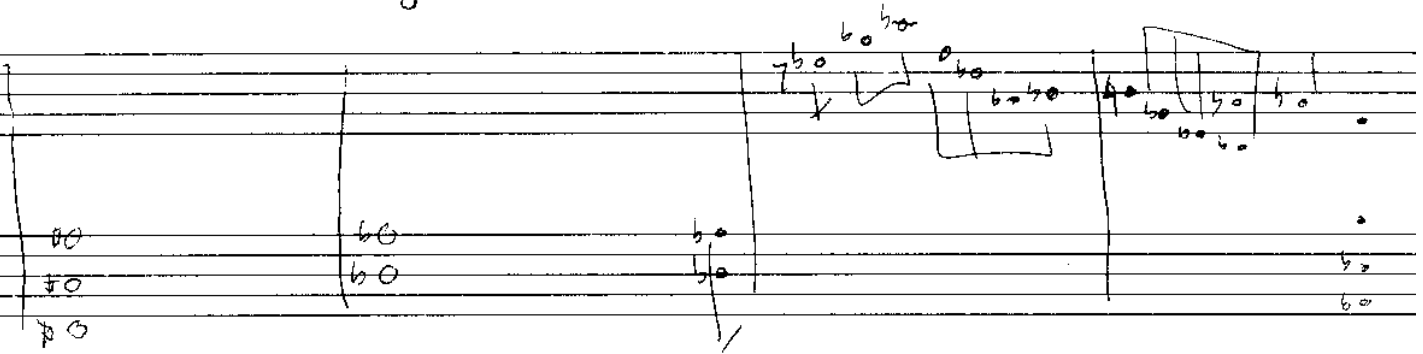
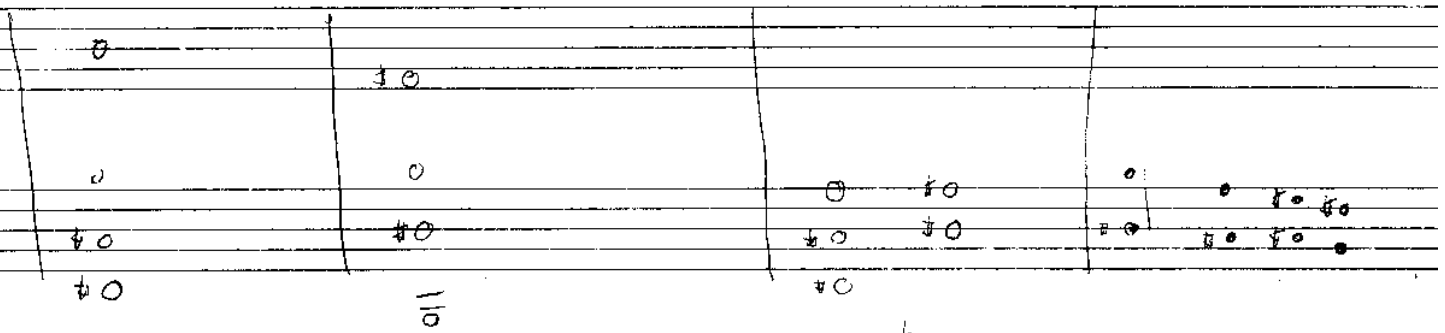
$\frac{2}{C-B^{\flat}-A^{\flat}F-}$ $B-E$ $B^{\flat}-E^{\flat}$ $C-F$ $B^{\flat}-E^{\flat}B^{\flat}A^{\flat}$



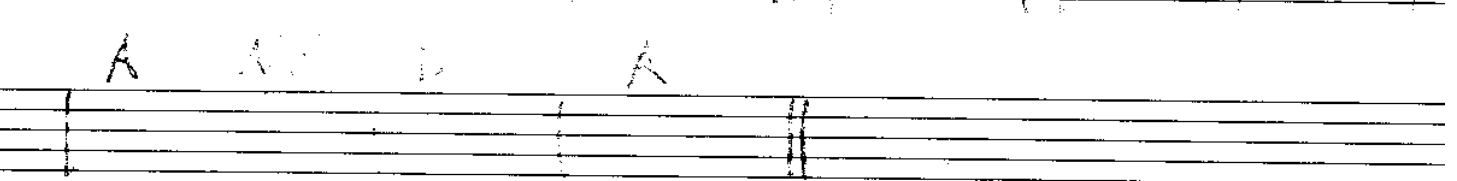
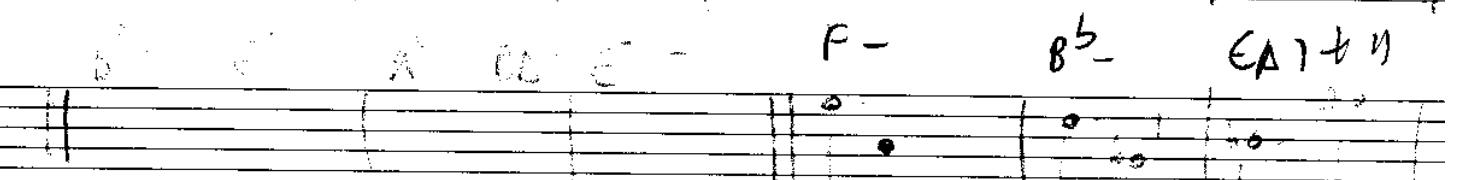
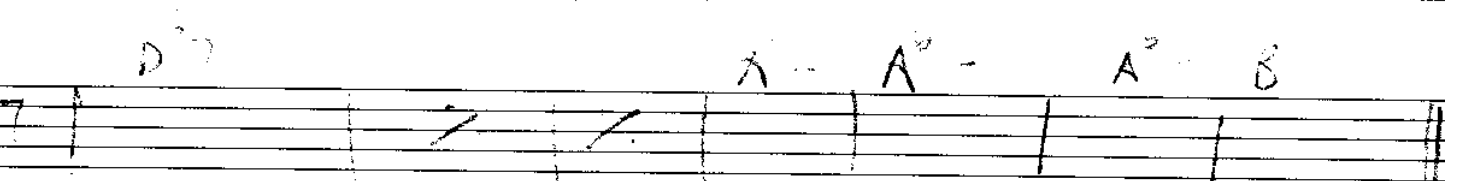
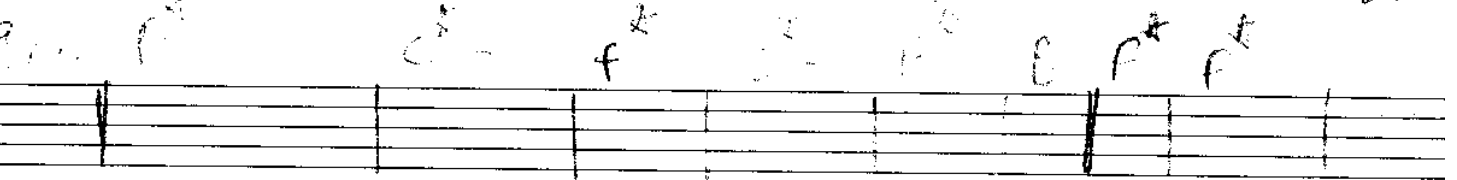
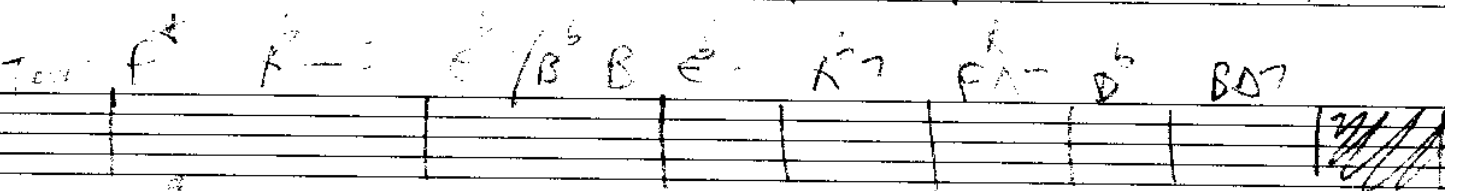
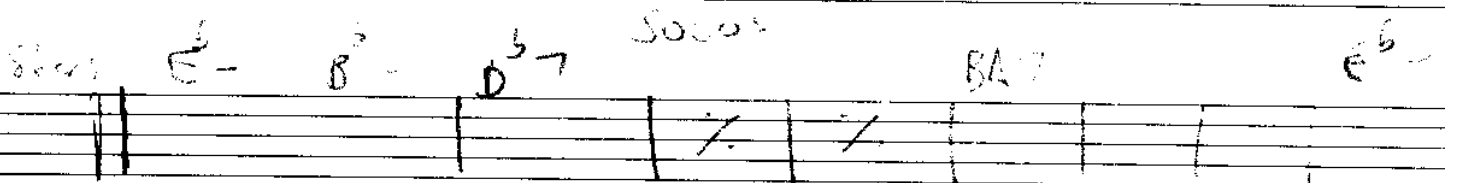
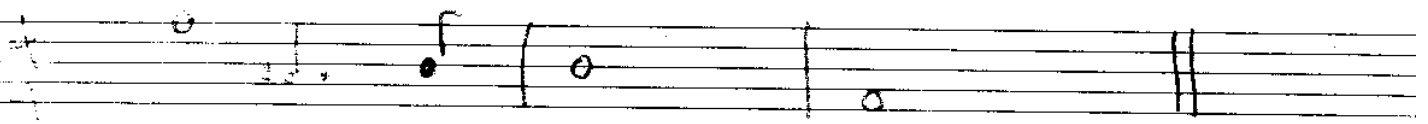
spring in here bill evans



STACKED



stacked chart 2



Stacked chart

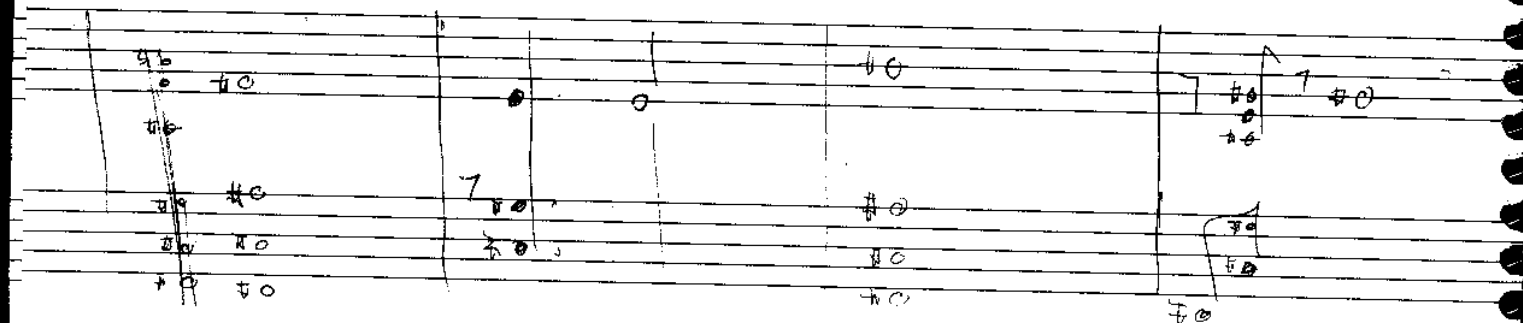
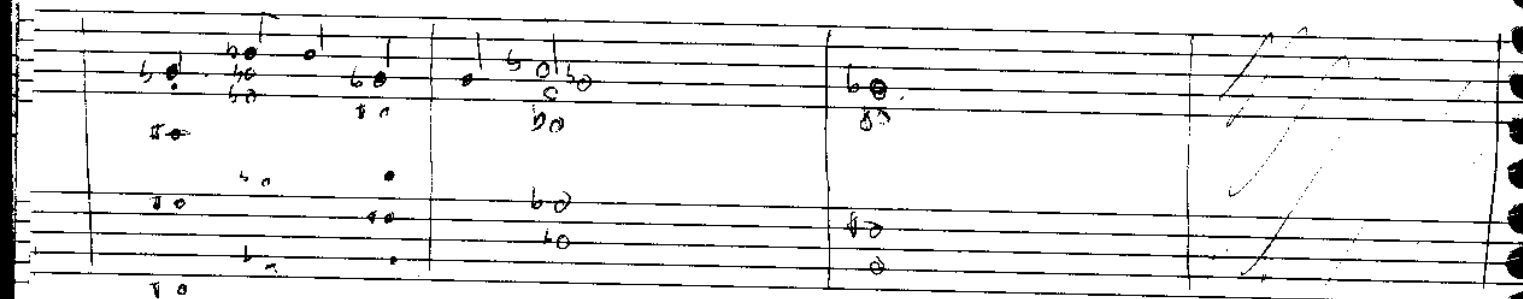
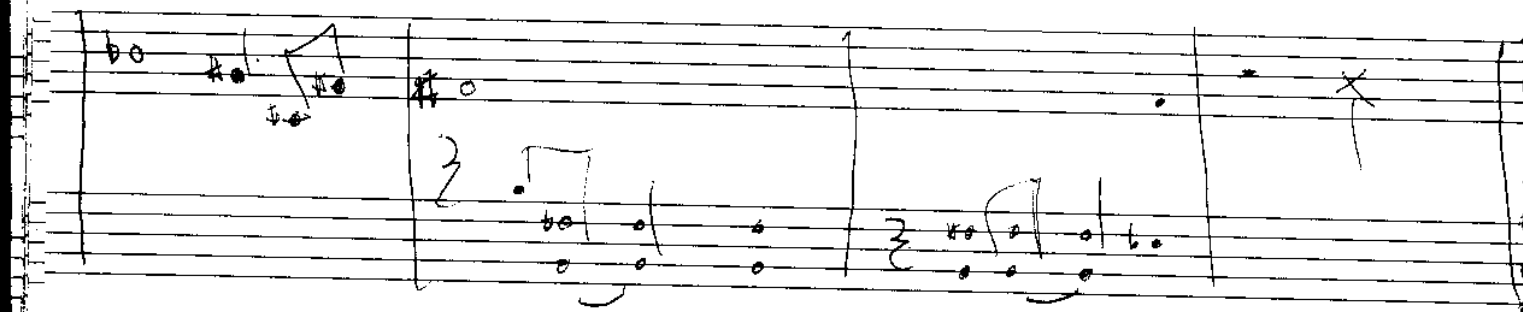
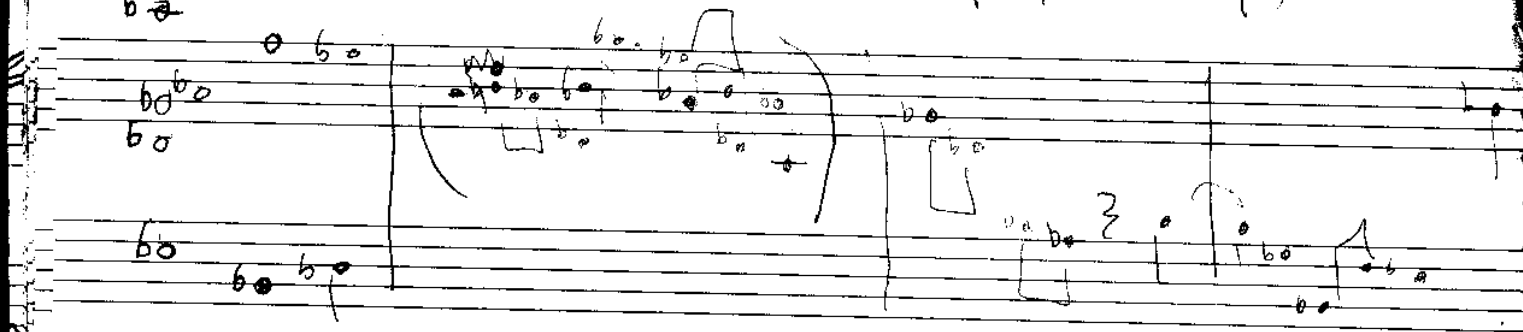
A handwritten musical score on ten staves. The notation includes various notes, rests, and chord symbols. The first staff features a melodic line with a wavy line above it. The second staff has a bass line with a wavy line below it. The third staff contains a series of notes with a wavy line above it. The fourth staff has a series of notes with a wavy line above it. The fifth staff contains a series of notes with a wavy line above it. The sixth staff has a series of notes with a wavy line above it. The seventh staff contains a series of notes with a wavy line above it. The eighth staff has a series of notes with a wavy line above it. The ninth staff contains a series of notes with a wavy line above it. The tenth staff has a series of notes with a wavy line above it.

Annotations and symbols include:

- Staff 1: E^5
- Staff 2: $B^b D^7$
- Staff 3: E^b
- Staff 4: P^b , A^5 , B^b , B , E^b , $A^b 7$
- Staff 5: B^b , C^\sharp , B
- Staff 6: F^\sharp
- Staff 7: $O^b 7$
- Staff 8: A^b
- Staff 9: B
- Staff 10: $3/4$

stacked. (play sweetly)

b_a



STAROUST

B^b

DB7

G7

G7

A

C[#]-

C-

B-

E7

E7 alt

A

F[#]-

B7

B-

C

E7

D

G7

A

C[#]-

C-

B-

D-

G7

A

E^b7

A^b7

D^b7

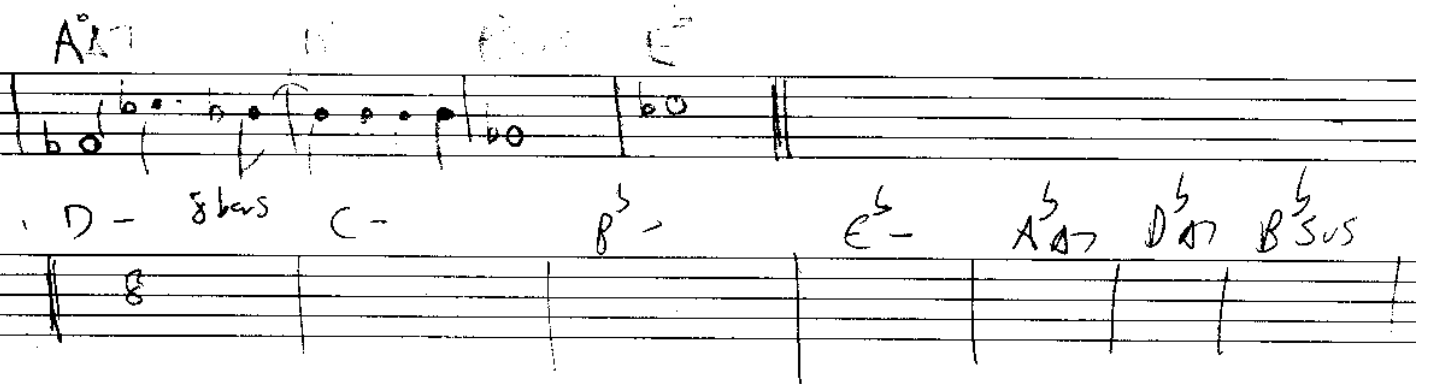
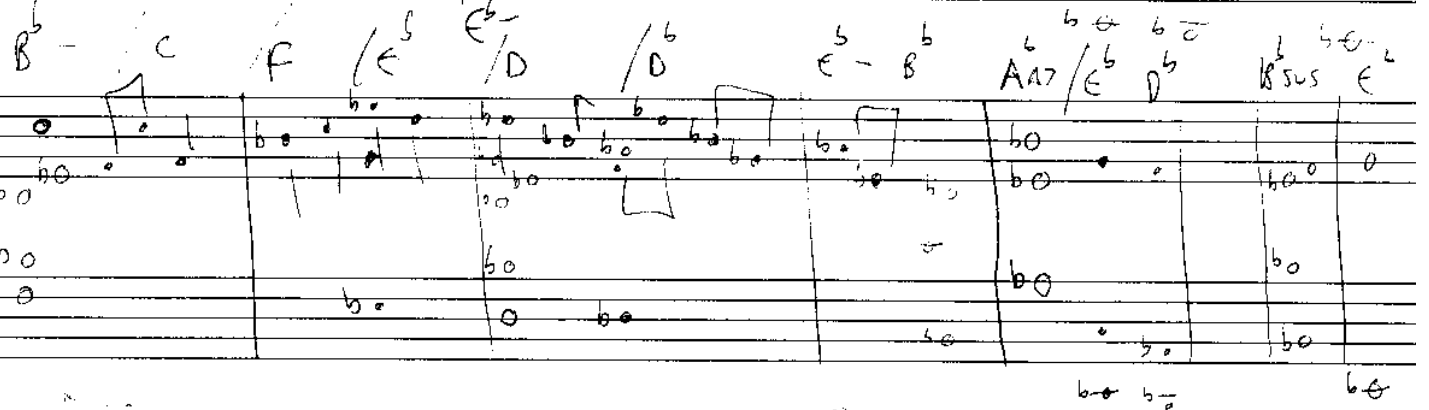
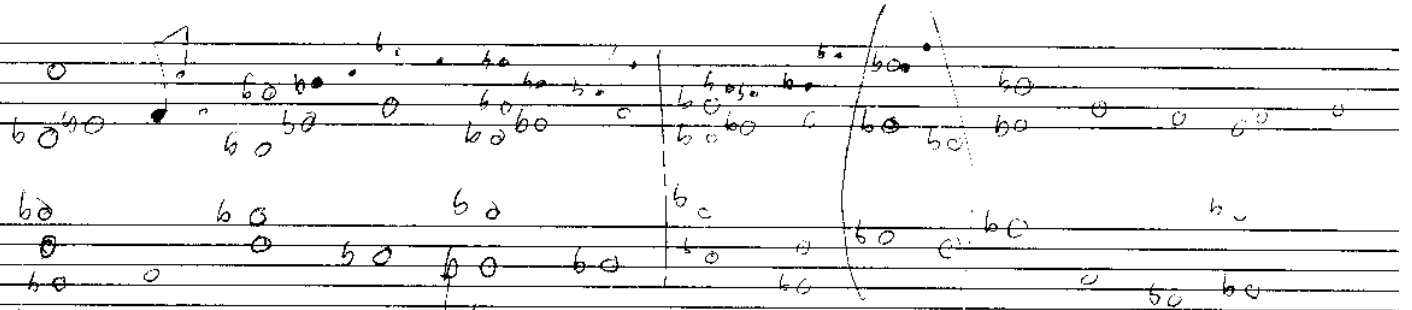
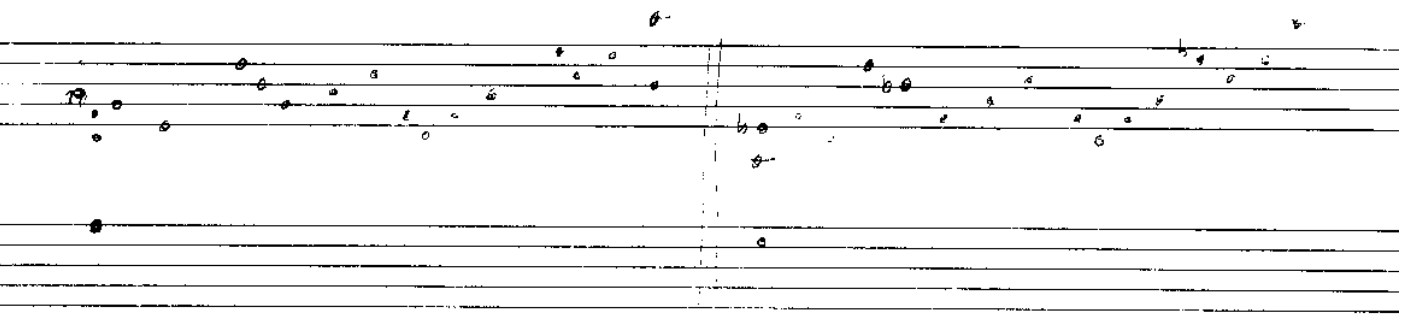
F[#]-

B-

E7

A

SUN 2



THE VEGETABLE HAS (ANDER)

D7

F[#]7

E7

F

G7

E-

F

3

4

D7

F[#]7

E7

E-

G7

F

C-

G-

A^b

B^b

E^b

F-

D7

F[#]7

E7

F

G

F

C-

G-

A^b

B^b

E^b

F

B^b & G

D^b/C

G-

F[#]7

E^b7

F[#]7

C-

E^b7

G^b7

E^b7

F^b7

C^b7

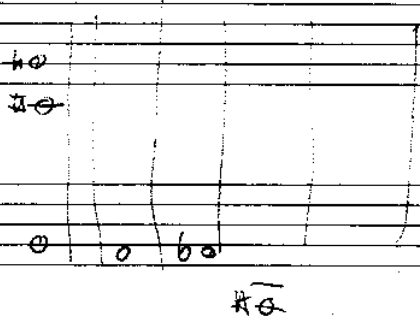
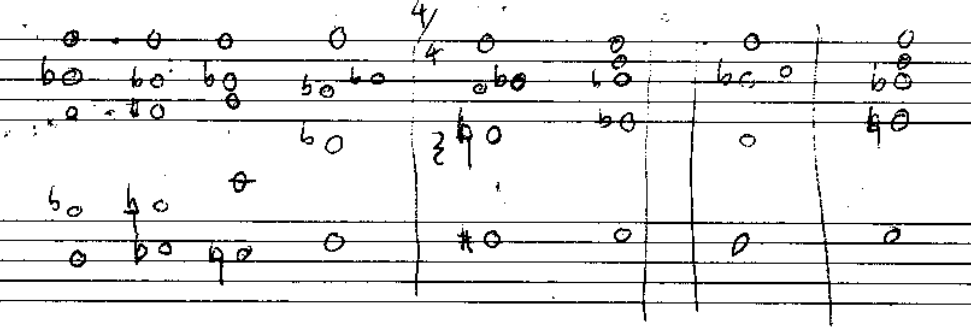
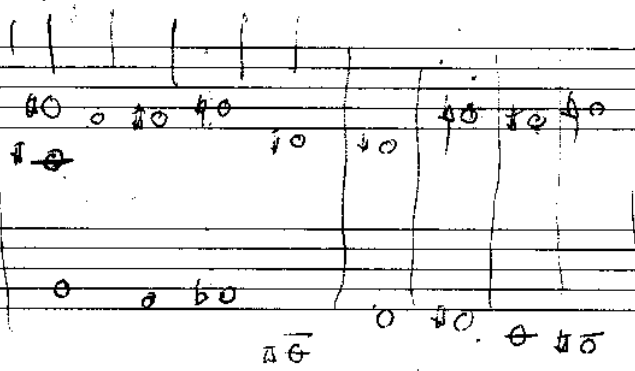
D-

DS-S

C

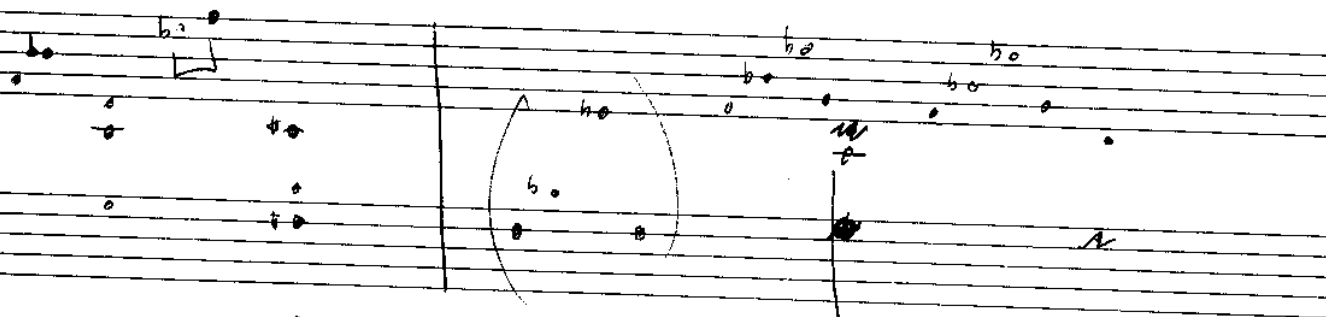
C/E

Trinity



3⁵

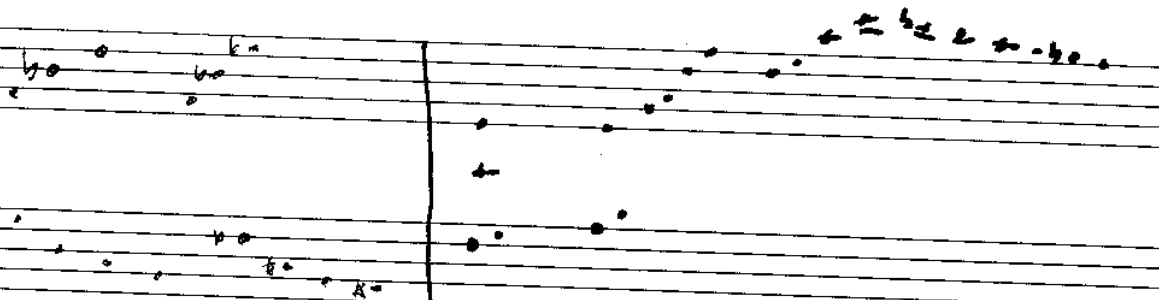
55



7's

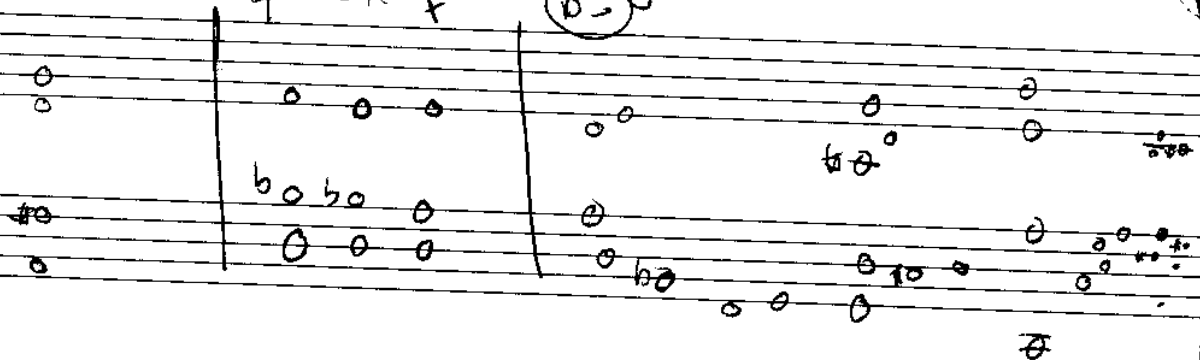


5

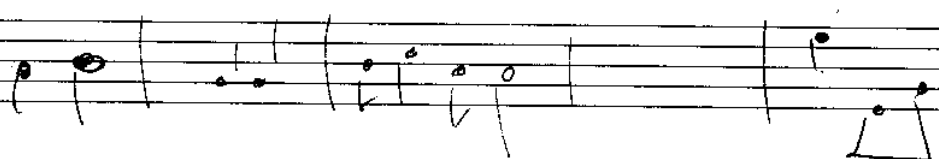
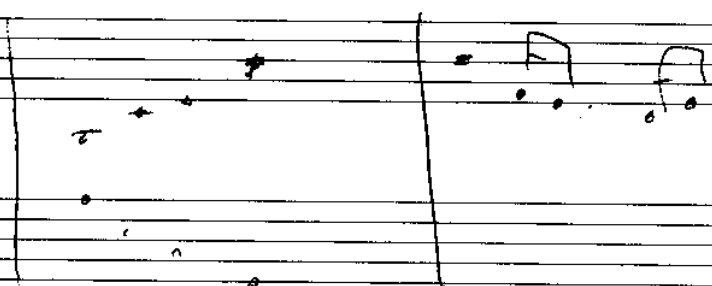
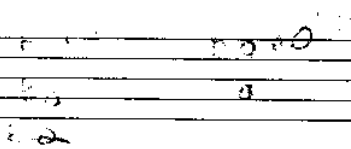


9-07 f

organ plan



UNTITLED



Handwritten musical notation on a five-line staff, featuring various notes, rests, and accidentals (sharps, flats, and naturals).

9 3 7

Handwritten musical notation on a five-line staff, including notes, rests, and accidentals.

Handwritten musical notation on a five-line staff, featuring notes, rests, and accidentals, with a large bracketed section.

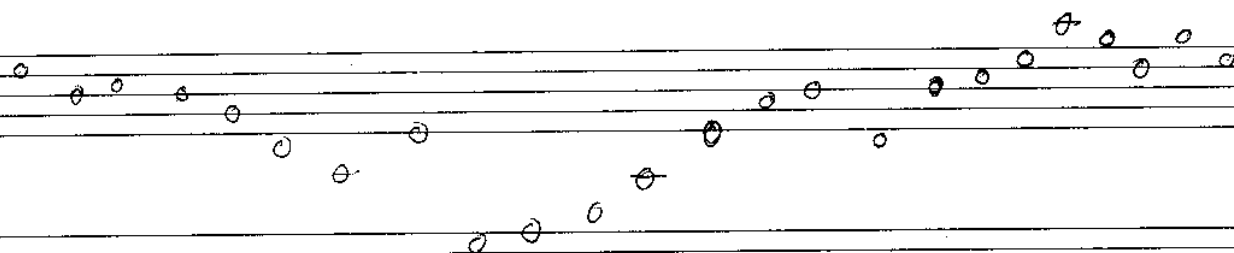
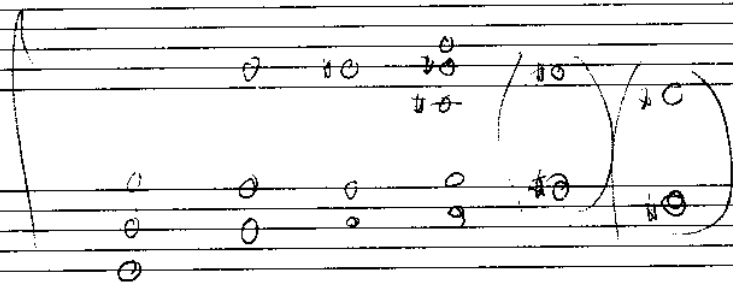
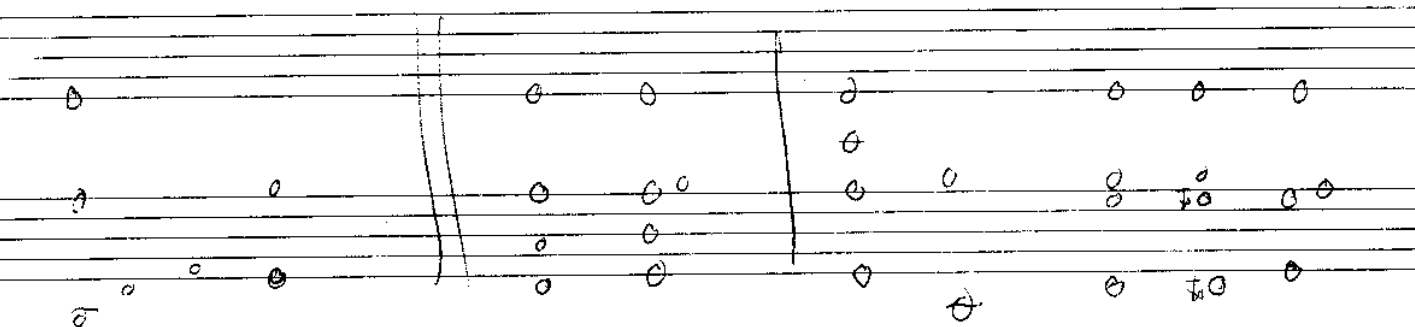
Handwritten musical notation on a five-line staff, including notes, rests, and accidentals.

Handwritten musical notation on a five-line staff, featuring notes, rests, and accidentals.

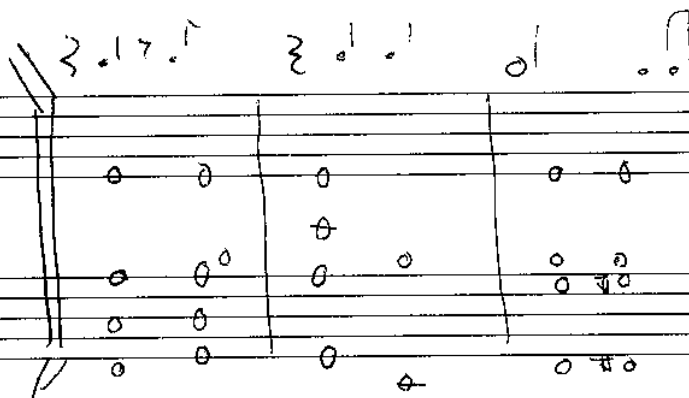
Handwritten musical notation on a five-line staff, including notes, rests, and accidentals.

Handwritten musical notation on a five-line staff, featuring notes, rests, and accidentals, with a boxed-in section on the left.

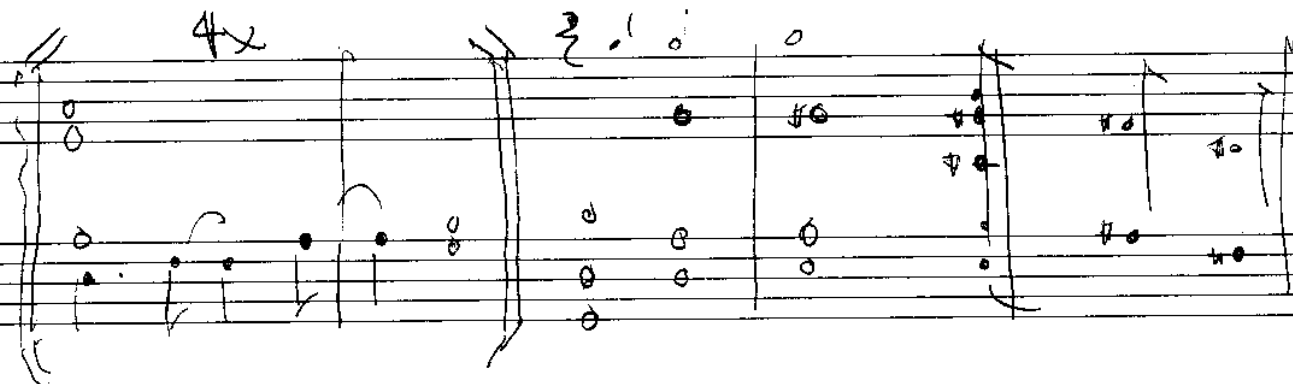
valentines day 01



4x



4x



VINEYARD

Handwritten musical notation on a five-line staff. It consists of several measures with notes and accidentals. A sharp sign is visible on the left side of the staff.

Handwritten musical notation on a five-line staff. The middle section contains the letters "F", "G", "A", and "B" written in a large, stylized font. There are also some notes and a large scribble on the right side.

Handwritten musical notation on a five-line staff. It shows several measures with notes and accidentals, including a sharp sign.

Handwritten musical notation on a five-line staff. It features several measures with notes and accidentals, including a sharp sign.

Handwritten musical notation on a five-line staff. It shows several measures with notes and accidentals, including a sharp sign.

VINEYARD

BASS

Handwritten musical score for "VINEYARD" in bass clef. The score consists of six staves. The first staff has a wavy line with notes. The second staff has notes and chords: F#, A-, B^b, G-, E^b, D^b. The third staff has notes and chords: F, E^b, F, G, A, B, A, A/C#. The fourth staff has notes and chords: C#7, Bsus, E/D, F#7, E^b7+9. The fifth staff has notes and chords: F#, G69, G-, G#7, Dsus, E^b7+9. The sixth staff has notes and chords: A-, Bsus, B-bb, D/A, Dsus. The seventh staff has notes and chords: F#sus, G#7+9, E. The score ends with a double bar line.